

Granite Falls School District

Granite Falls, Washington



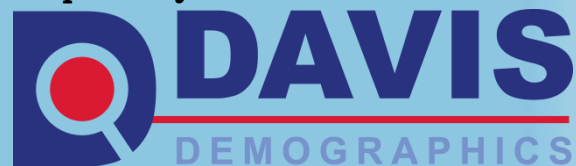
Student Population Forecast

By Residence

Fall 2020/2021 Report

2021/22 – 2027/28 Forecasted Student Population

Prepared by



July 28, 2021



TABLE OF CONTENTS

Introduction and District Background Executive Summary

Section One:	Methodology	
	Sources of Data	1
	Seven Year Projection Methodology	4
	Projection Variables	5
	Applying Variables to Generate Projections	9
Section Two:	Planned Residential Development	
	<i>Maps: Future Development in District</i>	12
	Planned Residential Development Summary	13
Section Three:	District Wide Student Projections	
	District Wide Student Projection Summary	16
	School Year 2020/21 - School Year 2027/28	17
Section Four:	Attendance Area Projections by Residence	
	School Projections by Residence	
	<i>K-2 Resident Projection</i>	19
	<i>3-5 Projection</i>	22
	<i>6-8 Resident Projection</i>	25
	<i>9-12 Resident Projection</i>	28
Appendix A:	Student Capture Rates	
Appendix B:	Study Area Projections	
	<i>Maps: Study Areas</i>	
	Study Area Resident Projections	



INTRODUCTION AND DISTRICT BACKGROUND

The Granite Falls School District has contracted with Davis Demographics & Planning, Inc. (DDP) to update and analyze demographic data relevant to the District's facility planning efforts. The scope of contracted work includes: mapping the District, geocoding a student file that is usually representative of October's 2020 official headcount, developing and researching pertinent demographic data, identifying future residential development plans, if any, and developing a seven-year student population projection. DDP will then assist the District in developing solutions for housing the future student population. This study was prepared to assist the District's efforts in evaluating future site requirements and attendance area changes.

The purpose of this report is to identify and inform the District of the trends occurring in the community; how these trends may affect future student population; and to assist in illustrating facility adjustments that may be necessary to accommodate the potential student population shifts. The District can then use this information to better plan for the need, location, and timing of facility or boundary adjustments.

The **Sources of Data** section details where the two sources of data, geographic and non-geographic, are collected and how each data item is used in the seven-year student population projection model.

The **Seven Year Projection Methodology** section discusses, in detail, how the factors used in the study were calculated and why they were used. These factors include the calculation of incoming kindergarten classes, additional students from new housing (referred to as student yield), the effects of student mobility, and a detailed review of planned residential development within the District.

The **Student Resident Projection Summary** sections are a review of SY 2020/21's student resident projection results. Included in these sections are a district-wide student population projection summary and a projected resident student population summary for each existing attendance area and study area.

While reading this report, it is important to remember that this is a snapshot of the current and potential student population based upon data gathered in fall 2020. Population demographics change, development plans change, funding opportunities can change, District priorities can change, and therefore, new projections and adjustments to the overall Facilities Master Plan will continue to be necessary for the future.



EXECUTIVE SUMMARY

The Granite Falls School District student population is projected to grow by 313 PK-12 students over the seven-year projection time frame. As of October 2020, the District served a total enrollment of 2,212 students, and by 2027/28 PK-12 enrollment may grow to 2,525. Last year (October 2019) the District had 2,193 PK-12 students, a growth of 19 from 2019 to 2020.

Due to the COVID-19 pandemic fall, 2020 student enrollment came in much lower than expected. The small class sizes (specifically in kindergarten) were initially carried out through the seven-year projections. DDP and District staff expect this drop was an anomaly due to the pandemic. Adjustments were made to projection factors to help account for some students returning to the district and to curb the student drop shown in the initial draft stages.

Demographic Trends

Local birth data is collected and is used as a factor in projecting future kindergarten enrollment. Over the last four years, area births have shown a slight overall growth in total birth counts from the 2015 base. A small decline in 2016 and 2017 was recorded, but births went back up in 2018 and 2019. The average birth rate for the previous 4 years was +2.5%. These fluctuations are reflected in the birth factors shown in Table 2 (page 5). Typically, the projection methodology multiplies the birth factors against the current Kindergarten class to generate a base for the following year's Kindergarten class and is further modified by future residential development. Due to the effects of the current pandemic on public school district enrollment, the traditional application of birth factors is insufficient to accurately project future Kindergarten class sizes. The small class size is counter to the recent growth trend exhibited in the past Kindergarten class sizes over the previous three years. If the birth factors in Table 2 are applied to the current Kindergarten class, as the projection methodology requires, the projected Kindergarten classes will show a declining trend. Therefore, Davis Demographics decided to adjust how birth factors are applied to the kindergarten class to show more realistic class sizes in the projected years. For more details, see page 4 of the report.

The mobility factors, which are an average of the in and out-migration of all established areas of the district over the last four years (2017-2020), indicate that GFSD is gaining students as they progress from grade to grade. For the current projection, the district experiences district-wide mobility of 1.02. This varies by grade level and area within the district and those variations are taken into consideration in the forecast. Factors that attribute to the gain are the in and out-migration of families within the District, the transfer of students in and out of private schools, as well as dropouts.

Residential development is expected to continue in the coming years, however, the city of Granite Falls is currently in a building moratorium. A total of 278 new units are scheduled to be built over the next 7 years. This information was gathered at the time of the writing of the report from the area city's planning authorities and is subject to change in the future. Davis Demographics applied a K-12 student yield factor of .409 to the new homes being built in the district boundaries.



SECTION ONE – METHODOLOGY

SOURCES OF DATA

Geographic Map Data

Five (5) geographic data layers were updated for use in the seven-year student population projections:

1. Street Centerline Database
2. Study Areas
3. Schools
4. Students – Historical and Current
5. Planned Residential Development

1) Street Centerline Data

The street database has associated attributes that contain, but are not limited to, the following fields: full street name, address range, and street classification.

The main function of the streets is in the geocoding process of the student data. Each student is geocoded to the streets by their given residence address. The geocoding process places a point on the map for every student in the exact location that student resides. This enables DDP to analyze the student data geographically.

Another vital utilization of the digital street database is in the construction of study areas. Freeways, major streets, and neighborhood streets are generally used as boundaries for the study areas.

2) Study Areas

Study areas are small geographic areas, similar to neighborhoods, and the building blocks of a school district. Study areas are geographically defined following logical boundaries of the neighborhood such as freeways, streets, railroad tracks, or rivers. Each study area is then coded with the elementary, middle, and high school that the area is assigned to. By gathering information about the district at the study area level, DDP and the District can closely monitor growth and demographic trends in particular regions and identify the potential need for boundary adjustments or new facilities.

3) Schools

School facility information including school name, address, unique identifying code, and grade ranges were provided to DDP by District staff.

4) Student Data

a. Historical Student Data - Historical enrollment is used to compare past student population growth and trends as well as the effects of mobility (move in, move out from existing housing) throughout the District. DDP utilized the three (3) previous year's (17/18, 18/19, and 19/20) geocoded students as historical data.

b. Current Student Data - A student data file for October 7, 2020 (received by computer data file from the School District) summarized by grade level and by study area is used as a base for student population projections. Existing students were categorized by study area through the



geocoding process that locates each student within a particular area based upon their given address. The projections run each of the next seven years from 2021/22 through 2027/28.

c. Student Accounting The Student Accounting Summary (Table 1) indicates the total student enrollment as of October 2020 and the number of students used in the seven-year student population projections. The projection model is based upon student residence and excludes students residing outside of the District's boundaries, students unable to be address matched, and special education students (special education students usually attend a school that services their particular need).

Student Accounting Summary
School Year 2020/21 Actual Enrollment (10/7/2020)

Total Students Provided by District File (October 2020)	2,212
Students Living out of District	-198
Unmatched Students	-6
Early Education (PK)	-86
<hr/>	
RESIDENT STUDENTS USED IN PROJECTIONS	1,922

Table 1 – Student Accounting Summary

5) Planned Residential Development

This data was obtained through discussions with the District, city agencies, county agencies, and major developers within the District boundaries. Data includes development name, location, housing type, total number of units, and projected move-in dates (phasing). Phasing for planned housing is factored into the seven-year projections. (See **SECTION 2** for a detailed listing of the planned residential development). In the student population projection, DDP includes all Approved and Tentative tract maps in addition to any planned or proposed development that possibly will occur within the projection timeframe. The planned residential development information and phasing estimates are a snapshot of the District at the time of this study.

Data Used for Variables

Three sets of data were compiled and reviewed for use in the seven-year student population projections by residence:

1. Births by census tract
2. Mobility factors
3. Student yield factors

1) Births by Census Tract Data

Birth data by census tract was obtained from the Washington State Department of Health for the years 2014-2019 and roughly correlated to the Granite Falls School District. Past changes in historical birth rates are used to estimate the future incoming kindergarten student population from existing housing.



2) Mobility Factors

Mobility refers to the increase/decrease in the migration of students within the District boundary (move-in/move-out of students from existing housing). Mobility, which is essentially a modified cohort, is applied as a percentage of increase/decrease among each grade for every year of the projections.

3) Student Yield Factors (SYFs)

The student yield factors, when applied to planned residential development units, determine how many additional students will be generated from new construction within the District. The student yield factors, combined with planned residential development units are used to determine the number of students generated from new residential housing development projects. Student yield factor calculations will be discussed again in the **Seven Year Projection Methodology** section.



SEVEN-YEAR PROJECTION METHODOLOGY

The projection methodology used in this study combines historical student population counts, past and present demographic characteristics, and planned residential development to forecast the future student population at the study area level. District-wide projections are summarized from the individual study area projections. **These projections are based on where the students reside and where they should be attending school. We use the actual location of where the students reside, as opposed to their school of enrollment, to provide the most accurate estimate of where future school facilities should be located.** The best way to plan for future student population shifts is to know where the next group of students will be residing. The following details the methodology used in preparing the student population projections by residence.

Seven Year Projections

Projections are calculated seven years from the date of projection for several reasons. The planning horizon for any type of facility is typically no less than five years, often longer. Seven years are usually sufficient to adequately plan for a new facility. It is a short to mid-term solution for planning needs. Projections beyond seven years are based on speculation due to the lack of reliable information on birth rates, new home construction, and economic conditions.

Why Projections are Calculated by Residence

Typically, school district projections are based on enrollment by school. However, this method is inadequate when used to locate future school facility needs, because the location of the students is not taken into consideration. A school's enrollment can fluctuate due to variables in the curriculum, program changes, school administration, and open enrollment policies. These variables can skew the apparent need for new or additional facilities in an area.

The method used by DDP is unique because it modifies a standard cohort projection with demographic factors and actual student location. **DDP bases its projections on the belief that school facility planning is more accurate when facilities are located where the greatest number of students reside.**

The best way to plan for facility requirements is to know where the next group of students will be residing. The following details the methodology used in preparing the student population projections.

**PROJECTION VARIABLES**

Each year of the projections, 12th-grade students graduate and continuing students' progress through to the next grade level. This normal progression of students is modified by the following factors:

1) Incoming Kindergarten

Live birth data is reported to the Washington State Department of Health by the resident census tract of the mother. DDP uses the birth data by census tract roughly correlated to the district boundary and applies the data accordingly. If need be, a different birth factor can be applied to various areas of the District.

Incoming kindergarten classes, for existing homes, are estimated by comparing changes in past births in the area. Table 2 illustrates the total births for each census tract in the Granite Falls School District from 2014 to 2019. Incoming kindergarten classes are determined by multiplying the existing kindergarten class (2020/21) by the percent increase/decrease in the birth rate for the year the kindergarten class was born (2015). Assuming that the 2020/21 school year kindergarten class was born in 2015; DDP compared the total births in 2015 to the total births in 2016, to determine a factor for next year's kindergarten class (2021/22). The 2015 births were compared to 2017 (2022/23's K class), 2015 to 2018 (2023/24's K class), and 2015 to 2019 (2024/25's K class).

Births by Zip Census Tract								Birth Rate		
Birth Year	Kinder Year	536.02	536.03	536.04	535.05	535.06	Total	% Change*	Birthrate Used in Forecast**	School Year
2014	2019	58	33	37	53	58	239	88.5%	+0.19	2019/20
2015	2020	66	54	39	44	67	270	Base Year		2020/21
2016	2021	64	42	46	52	59	263	97.4%	1.16	2021/22
2017	2022	76	43	51	46	52	268	99.3%	1.18	2022/23
2018	2023	73	47	61	45	64	290	107.4%	1.26	2023/24
2019	2024	63	50	63	58	52	286	105.9%	1.25	2024/25
2020	2025	Birth data was not available at the time of the study						104.2%	1.23	2025/26
2021	2026							104.2%	1.23	2026/27
2022	2027							104.2%	1.23	2027/28

* % Change refers to the change in total births for each year compared to the base year.

**15% increase due to COVID-19

Source: Washington Department of Health Statistics

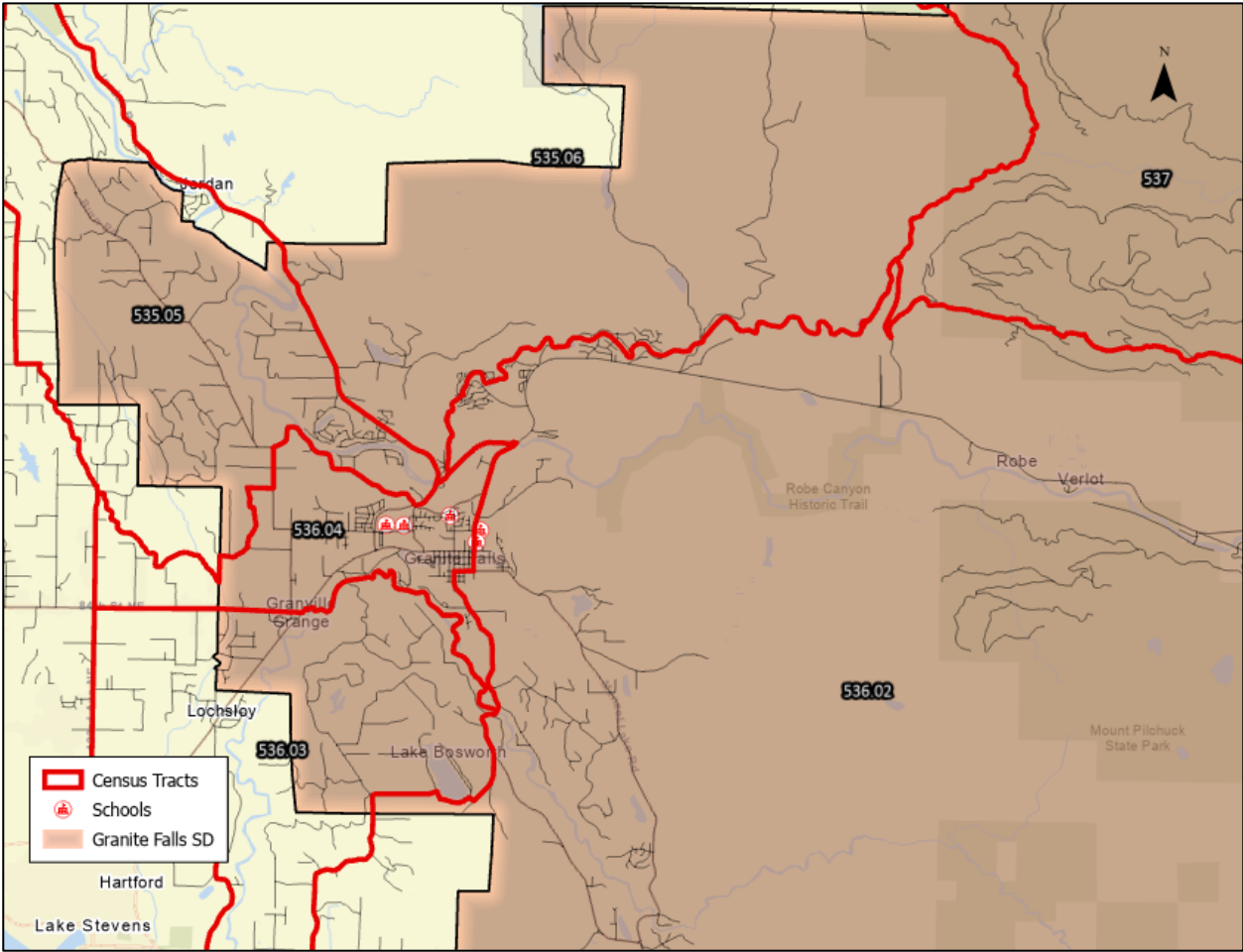
Census Tracts 537, 538.01, and 538.03 were not used. No GFSD students are from this area

Table 2- Birth Rate Factors

*Source: Washington Department of Health, Vital Statistics, Birth Data by census tract, 2014-2019.

**For years 2025-2027 factors, an average of the 3 previous years was used.

*Davis Demographics used an increase of 19% for the birth rates over the next seven years to help compensate for the expected return of some kindergarteners to the Granite Falls School District. This is based on the assumption that there was an artificial decline in the 2020 kindergarten class. The COVID-19 pandemic has been the main factor attributing to the decline. Parents are choosing to not enroll students in classroom settings and are using alternate means of education. The increase in birth rates should help account for parents re-enrolling students after the pandemic has ended.



Census Tract Map



2) Student Mobility Factors

Student mobility factors further refine the seven-year student population projections. Mobility refers to the increase/decrease in the migration of students within the District boundary (move-in/move-out of students from existing housing). Mobility, similar to a cohort, is applied as a percentage of increase/decrease to each grade for every year of the projections.

A net increase or decrease of zero students over time is represented by a factor of **1.000**. A net student loss is represented by a factor less than **1.000** and a net gain by a factor greater than **1.000** (see Table 4).

Example:

$$\begin{array}{rcl} 100 & \text{1st grade students in fall 20/21} & \\ \times & 1.03 & \text{(Mountain Way ES 1st grade mobility)} \\ \hline = & 103 & \text{2nd grade students in fall 21/22} \end{array}$$

Having historical student data categorized by study area is extremely helpful in calculating accurate student mobility factors. DDP was able to utilize the last four years (school years 2017/18, 2018/19, 2019/20, and 2020/21) student data. The 2017/18 student data was compared to 2018/19, 2018/19 to 2019/20, and 2019/20 to this year's student data at the study area level. Grades 1-12 mobility were all calculated to correspond with the elementary school attendance areas.

There are a few reasons for using the last four years of data, and for not using more or fewer years for the mobility study. If student data goes back too far (5+ years), then specific trends that were occurring during that time that are not occurring now will be factored into the projections and therefore not reflect the most recent patterns. If only the last few years of student data (i.e., SY2019 and SY2020 only) are used, then isolated anomalies occurring in the District (sharp rise or decline in the student population) would then be overrepresented in the seven-year projections. DDP's experience has shown that using the last four years of data and averaging the three years of change provides a more balanced and accurate mobility trend for student projections.

AREA	K to 1	1 to 2	2 to 3	3 to 4	4 to 5	5 to 6	6 to 7	7 to 8	8 to 9	9 to 10	10 to 11	11 to 12
MOUNTAIN WAY ES	1	1.03	0.99	0.99	1.04	1.05	1.03	1.02	1.03	1.01	1.02	1.01

Table 3- Mobility Factors



3) Student Yield Factors

The student yield factors, when applied to planned residential development units, determine how many additional students will be generated from new construction within the District.

Before the SYFs can be calculated from the current housing stock, the year of construction for each housing type must be determined. In general, new housing attracts families with elementary school-aged children. Over the following 12 to 15 years, the children grow older and pass through the grades. A portion of those families, now without school-aged children, will then relocate and the cycle is then repeated throughout the life of the home. Identifying the year of construction and number of current resident students in recently built housing units assists in estimating the number of new students generated from future residential development.

Typically, student yield factors are calculated for 3 housing types single-family detached, multi-family attached (townhomes/condos, and apartments. The majority of new development have been single-family homes, one project that contains multi-family homes is currently active, however, the sample size of homes was not enough to produce accurate student yield factors. DDP used 1 set of yields for all housing types (see section 2 Planned Residential Development for new units planned within the district). For the fall 2020 demographic study, DDP sampled 2 residential developments, Suncrest Farms and Glenmore. A total of 455 single-family units were used from the 2 projects.

Total Units Sampled: 455		
	Students	SYF
SYF K-2	53	0.116
SYF 3-6	69	0.152
SYF 7-8	28	0.062
SYF 9-12	36	0.079
SYF K-12	186	0.409

Table 4– Student Yield Factors

4) Planned Residential Development

Closely related to the student yield factors are planned residential development units. Planned residential development data is collected to determine the number of new residential units that will be built over the time frame of the student population projections. The units built within the next seven years will have the appropriate SYF applied to them to determine the number of new students the residential development will yield.

This data was obtained through conversations with the District, the City of Granite Falls, and developers with current and future housing projects within the District boundaries. A database and map of the planned residential developments were created, including, when available, project name, location, housing type, total number of units, and estimated occupancy dates (phasing schedule). Projected phasing is based upon occupancy of the unit and is used to help time the arrival of students from these new developments.

The resident forecast includes all Approved and Tentative tract maps in addition to any planned or proposed development that may occur within the projection timeframe. The planned residential development information and phasing estimates are a snapshot of the District at the time of this study. All the information may change and should be updated annually. Currently, the city of



Granite Falls is in a building moratorium. To continue building new homes the city must expand the current wastewater treatment plant, which is estimated to take 5 years.

See Section two for a map of the known residential projects within the school district. Following the map is a breakdown of the estimated occupancy date for new housing units over the next seven years (from fall 2020 through fall 2027) by study area and by the three main housing types (single-family detached – SFD, multi-family attached – MFA, apartments – APT). In addition, DDP has included a residential development list, which is sorted by study area and is an inventory of all known residential projects that are expected to be active over the next seven years.



APPLYING THE VARIABLES TO GENERATE THE PROJECTIONS

The following paragraphs summarize how DDP uses the factors to determine the student population projections. Remember that these projections are based on residence.

Granite Falls School District has been divided into 42 study areas. Every study area is coded with the school code of the elementary, middle, intermediate, and high school attendance area it falls within. The residential projections are calculated at the study area level. This means that DDP conducts 42 individual projections that are based upon the number of students residing in each study area.

The first step in calculating the projections is to tally the number of students that live in each study area by each grade (Kindergarten through 12th grade). The current student base (school year 2020/21) is then passed onto the next year's grade (2020/21's K become 21/22's 1st graders, 2020/21's 1st graders become 2021/22's 2nd graders, and so on). After the natural progression of students through the grades is applied, then birth factors are multiplied to the current kindergarten class to generate a base for the following year's kindergarten class.

Next, a mobility factor is applied to all grades. Again, these factors take into account the natural in/out-migration of students throughout the District. The mobility factor is applied to each student in every grade (K-12). A unique mobility factor is applied to each elementary school attendance area determined by the mobility factor calculations.

The last essential layer applied to the projections deals with additional students from planned residential development. This is a simple calculation, again conducted at the study area level, where the estimated number of new housing units for a particular year is multiplied by the appropriate student yield factor. For example, if 100 single-family detached (SFD) units are to be built in a specific study area in a given year, then you would multiply this number (100) by the SFD K-2 student yield factor (.116) and the resulting number (12) is divided evenly among the three grades.

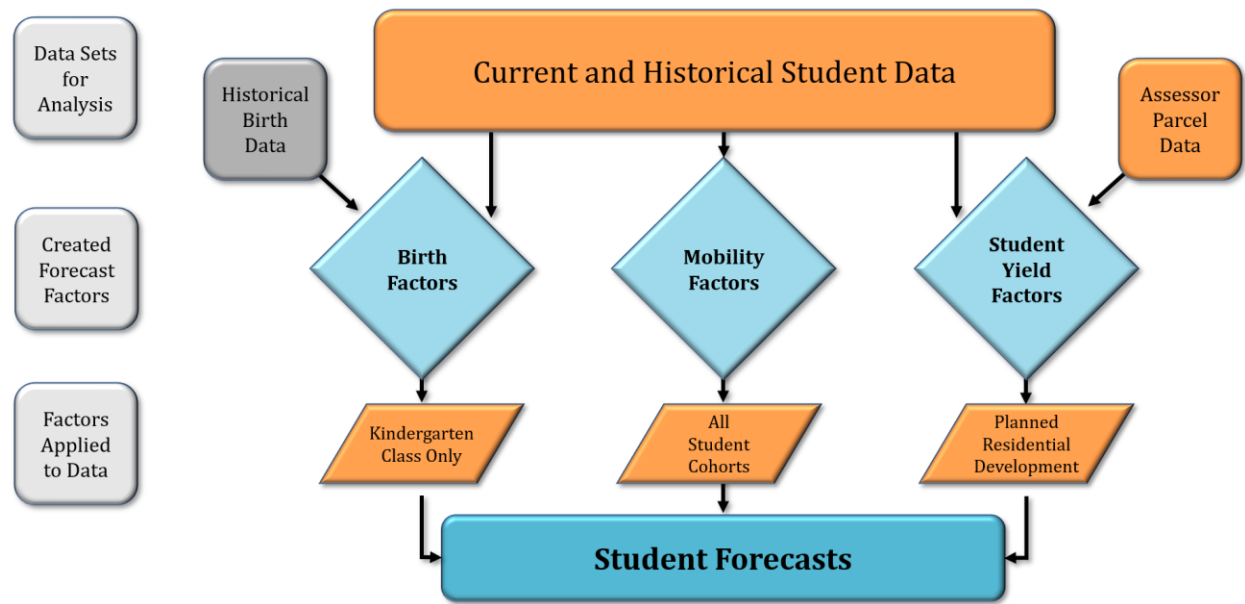
To finish generating the projections by residence, the same process is conducted for each of the 42 study areas. Once the projections have been run at the study area level, then it is a simple addition to determine projections for each of the District's attendance areas or a district-wide summary. For example, the residential projection for the Mountain Way Elementary attendance area is simply the summary of all of the study areas that make up this specific attendance area (see Section Four for the projections of each elementary and middle school attendance area).

The District Summary for the projections (Section Four) is a total summary of all 42 study areas. The projections exclude all of the students that live completely outside of the District's boundaries. These students are factored into the projections by simply adding the existing totals at the bottom of the district summary. DDP adds the current total out-of-district students to each year of the projections because there is no way to accurately forecast these students in the future.

Current and historical students, geographic data, and non-geographic data are used to calculate the factors used in the student population projections by residence. These factors are applied using SchoolSite Software and projections are calculated for each study area for each grade.



Projections by Residence Flowchart





SECTION TWO – PLANNED RESIDENTIAL DEVELOPMENT

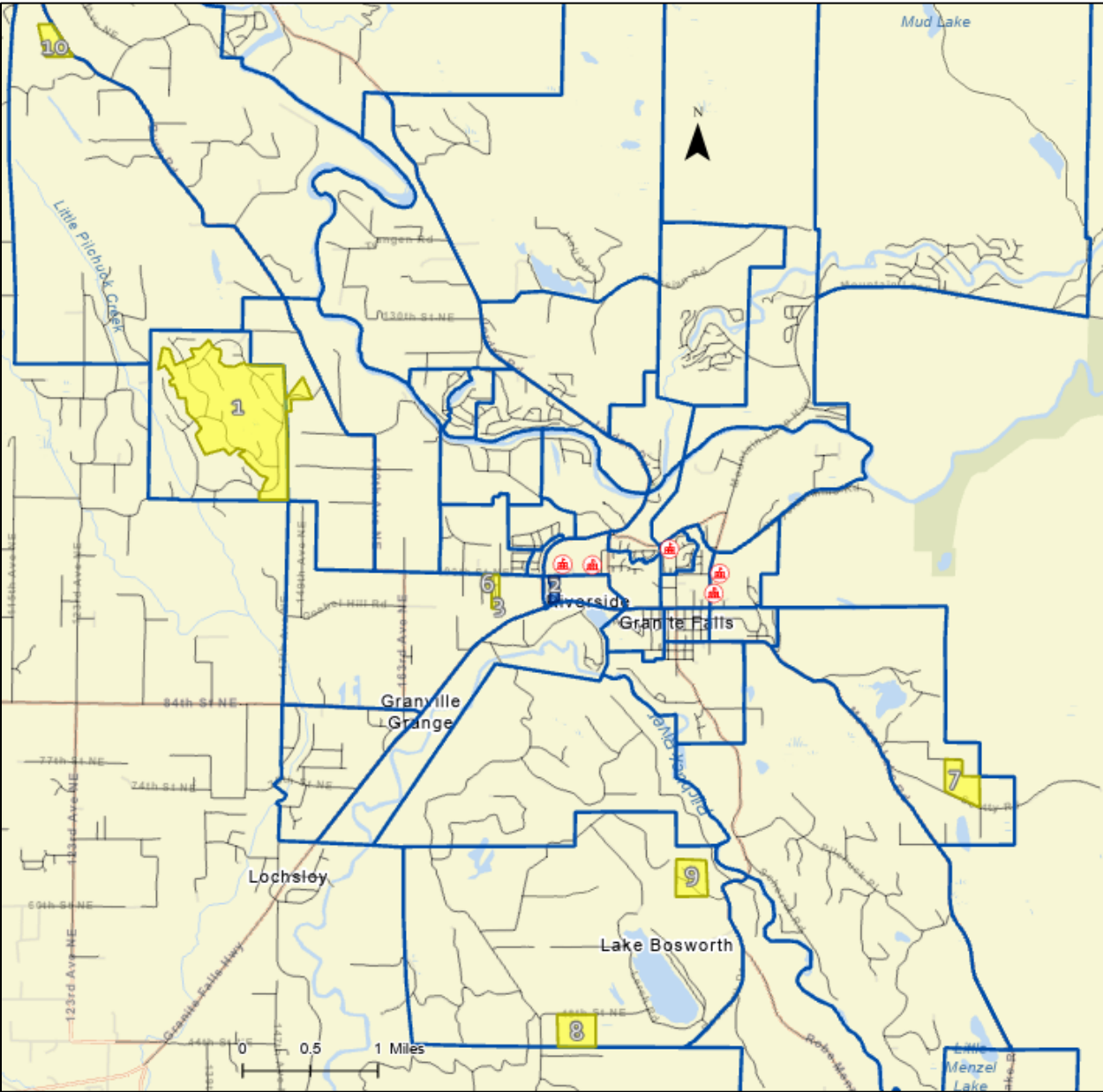
This data was obtained through discussions with the District, the City of Granite Falls, and contacting developers with current and future housing projects within the District. Phasing estimations were made by DDP and city planning. A database and map of the planned residential development were created including, when available, project name, location, housing type, total number of units, and estimated move-in dates (phasing schedule). Projected phasing is based upon occupancy of the unit and is used to help time the arrival of students from these new developments. Please see the next page for a map of the known residential projects in the Granite Falls SD attendance areas. Following the map is a breakdown of the estimated occupancy dates for new housing units over the next seven years (from the 20/21 school year to the 27/28 school year) by study area and by the two main housing types (single-family detached, SFD, multi-family attached, MFA).

The student population projection by residence includes all approved and tentative tract maps in addition to any planned or proposed development that possibly will occur within the seven-year projection timeframe. The planned residential development information and phasing estimates are a snapshot of the District at the time of this study. All of the information may change and should be updated annually.

Included in the residential development section is an Additional Housing Unit Capacity map of the City of Granite Falls. The map details plots of land that can provide additional housing. Some plots detailed in the map are under construction and included in the seven-year projections, while the majority of them are still inactive and on hold until the city-wide construction moratorium comes to an end. It is important to continue to monitor the growth plan as the projects in the area can produce a considerable number of new homes.



RESIDENTIAL DEVELOPMENT MAP





Fall 2020/21 Demographic Report

Total SFD = 226 Total MFA = 52 Total = 278

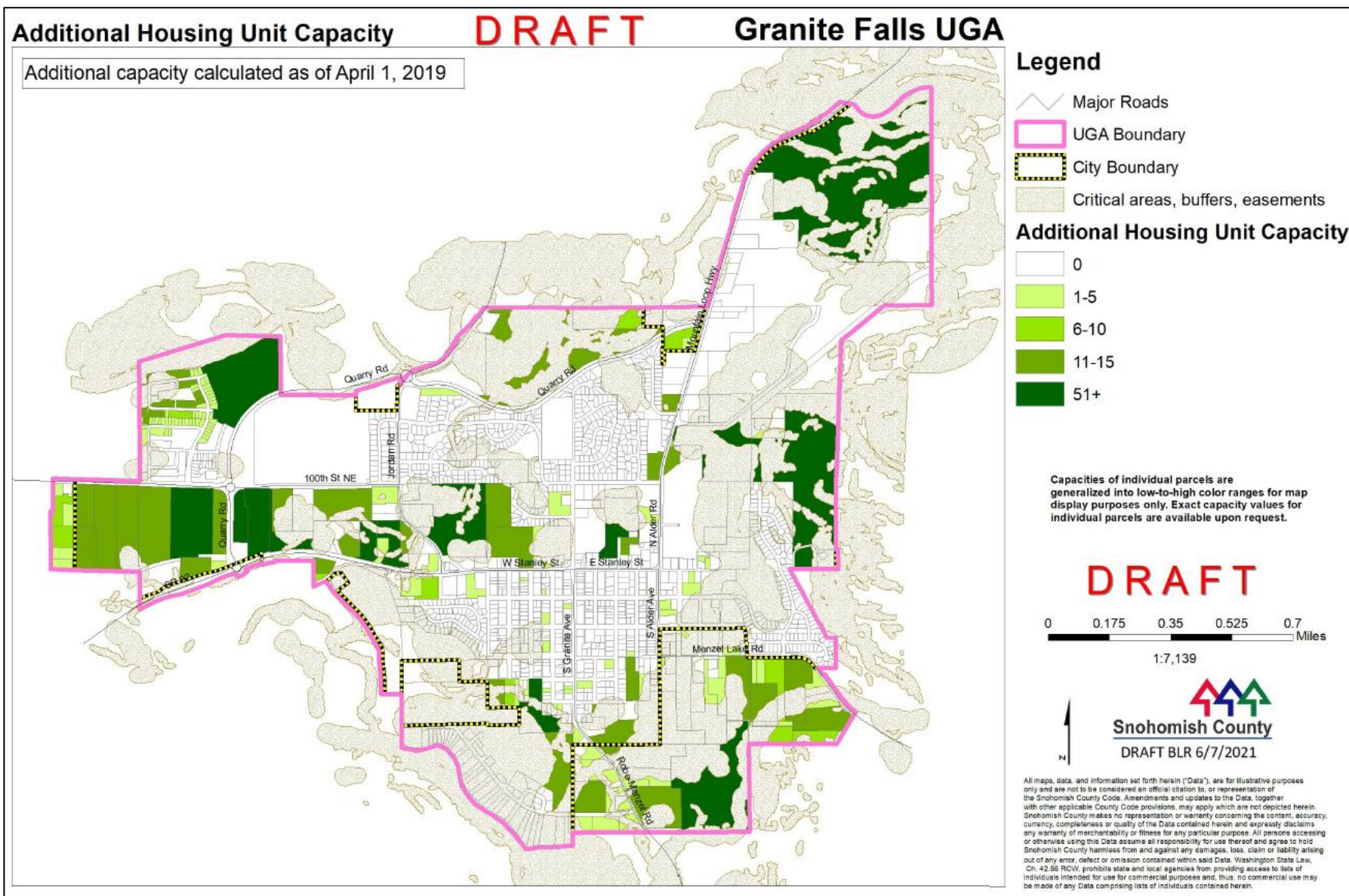
Study Area	10/2020 - 10/2021			10/2021 - 10/2022			10/2022 - 10/2023			10/2023 - 10/2024			10/2024 - 10/2025			10/2025 - 10/2026			10/2026 - 10/2027			Total Units
	SFD	MFA	OTHER	SFD	MFA	OTHER	SFD	MFA	OTHER	SFD	MFA	OTHER	SFD	MFA	OTHER	SFD	MFA	OTHER	SFD	MFA	OTHER	
2	0	0	0	0	0	0	4	0	0	0	0	0	0	0	0	0	0	0	0	0	0	4
6	26	0	0	26	0	0	0	0	0	0	0	0	0	0	0	0	0	0	0	0	0	52
9	3	0	0	25	0	0	25	0	0	25	0	0	25	0	0	25	0	0	19	0	0	147
30	10	0	0	4	0	0	0	0	0	4	0	0	0	0	0	0	0	0	0	0	0	18
57	0	0	0	0	0	0	5	0	0	0	0	0	0	0	0	0	0	0	0	0	0	5
58	0	27	0	0	25	0	0	0	0	0	0	0	0	0	0	0	0	0	0	0	0	52
Total	39	27	0	55	25	0	34	0	0	29	0	0	25	0	0	25	0	0	19	0	0	278
	Total 20 / 21 66			Total 21 / 22 80			Total 22 / 23 34			Total 23 / 24 29			Total 24 / 25 25			Total 25 / 26 25			Total 26 / 27 19			

Map Label	Developer	Project	Type	Status	Total Units	Yr 1	Yr 2	Yr 3	Yr 4	Yr 5	Yr 6	Yr 7	Units in Forecast
1	Pulte Homes	Glenmore	Single family detached	Active	300	3	25	25	25	25	25	19	147
2	Barnett Associates	Braidwood Village II	Multi-family attached	Active	96	27	25	0	0	0	0	0	52
3	DR Horton	The Falls	Single family detached	Active	35	18	17	0	0	0	0	0	35
6	CORNERSTONE HOMES	HIGHLAND ESTATES	Single family detached	Active	17	8	9	0	0	0	0	0	17
7	NA	5 PLAT SFD	Single family detached	Planning	5	0	0	5	0	0	0	0	5
8	NA	LAKE BOSWORTH HEIGHTS SP	Single family detached	Planning	4	0	0	0	4	0	0	0	4
9	ACME HOMES	HEMLOCK HEIGHTS	Single family detached	Active	18	10	4	0	0	0	0	0	14
10	Hillside Estates	Hillside Estates	Single family detached	Planning	4	0	0	4	0	0	0	0	4

SFD: Single-family detached

MFA: Multi-family attached

APT: Apartments





SECTION THREE – DISTRICT-WIDE STUDENT POPULATION PROJECTION

The student population is projected out seven years for each of the study areas, attendance areas, and for the entire Granite Falls School District. The District-Wide Summary enables the District to see a broad overview of future population shifts and what impact these shifts may have on existing and future facilities. Each attendance area is summarized to give a more local view of population changes and identify variances in the district. The study area listings enable the District to monitor student population growth or decline in neighborhood areas within the District.

Together, these projection summaries, present the means for identifying the timing of future population shifts and overall facility adjustments needed to accommodate these shifts. At any time, study areas and their projected resident students can be shifted between schools to assist in balancing enrollment, and school consolidation among various other analyses.

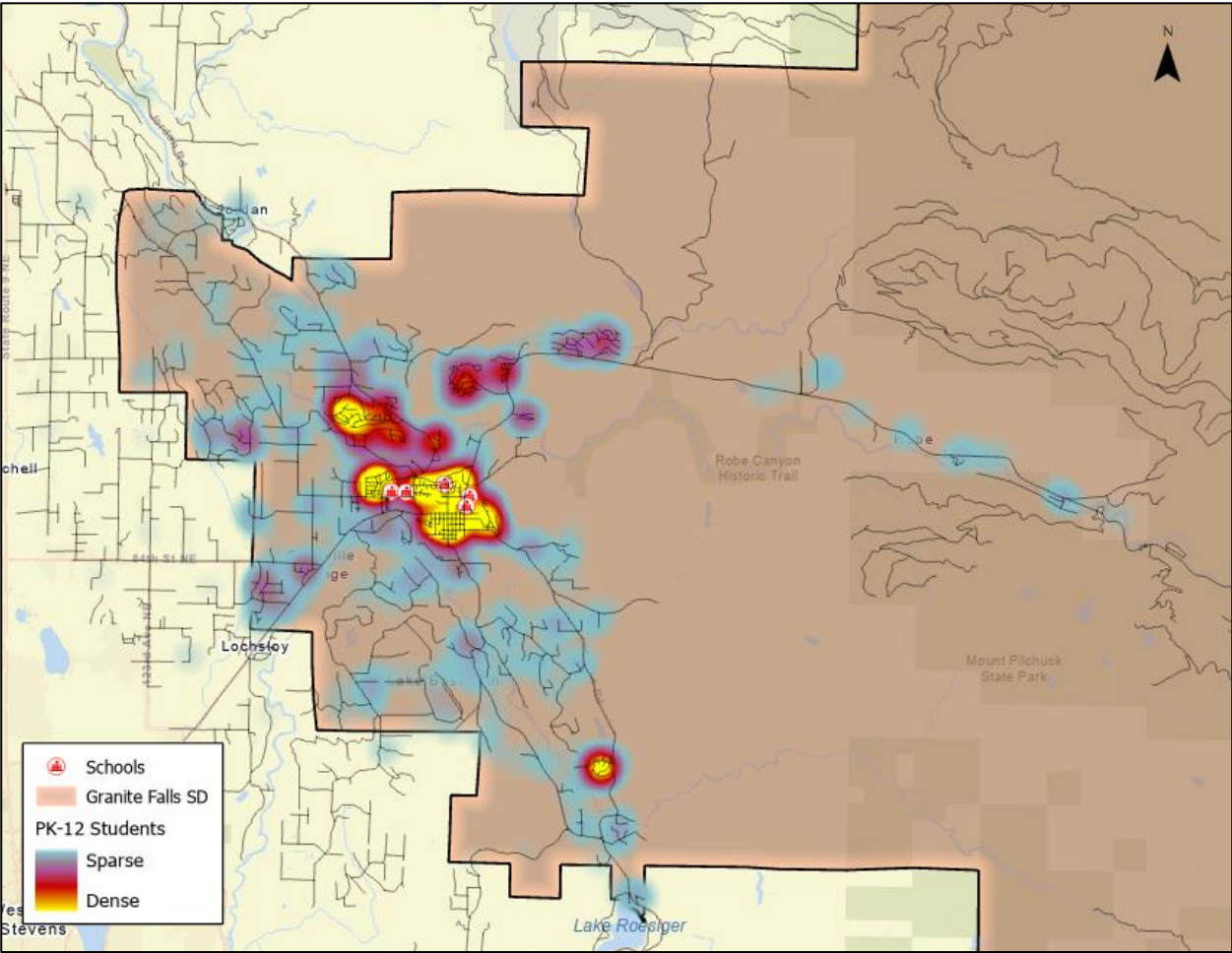


District-Wide Projection

Historic Resident Counts				Current	Forecasted Resident Counts						
Grade	2017	2018	2019	2020	2021	2022	2023	2024	2025	2026	2027
PK	73	68	72	86	86.0	86.0	86.0	86.0	86.0	86.0	86.0
K	102	149	153	126	148.7	153.1	163.1	162.3	160.2	160.8	161.0
1	105	106	166	150	152.5	151.7	154.4	164.2	163.3	161.2	161.5
2	127	123	113	163	157.1	160.2	157.6	160.2	170.1	169.2	166.8
3	142	142	125	112	163.9	158.6	159.3	157.2	159.5	169.3	168.2
4	128	145	152	129	113.4	165.3	158.3	159.0	156.5	158.9	168.4
5	139	136	151	157	136.8	121.1	173.2	165.8	166.6	163.8	166.0
6	125	157	144	163	167.5	146.8	128.5	183.1	175.0	174.9	172.8
7	116	144	158	155	170.0	175.1	152.3	133.3	189.3	181.1	179.5
8	147	119	152	161	160.2	175.9	179.7	156.3	136.8	193.9	185.3
9	139	157	118	162	167.2	166.6	181.9	185.6	161.5	141.4	200.1
10	139	149	157	119	164.9	170.4	169.0	184.3	188.0	163.6	143.2
11	154	145	158	158	122.7	169.8	174.5	172.9	188.5	192.3	167.3
12	157	159	141	167	160.9	125.5	172.2	176.9	175.2	190.9	194.6
Resident Student Totals by Grade Configuration											
PK-2	407	446	504	525	544	551	561	573	580	577	575
3-5	409	423	428	398	414	445	491	482	483	492	503
6-8	388	420	454	479	498	498	461	473	501	550	538
9-12	589	610	574	606	616	632	698	720	713	688	705
PK-12	1,793	1,899	1,960	2,008	2,071.8	2,126.1	2,210.0	2,247.1	2,276.5	2,307.3	2,320.7
Out-of-District Students											
PK-2	31	23	20	18	18.0	18.0	18.0	18.0	18.0	18.0	18.0
3-5	33	21	19	14	14.0	14.0	14.0	14.0	14.0	14.0	14.0
6-8	35	24	22	19	19.0	19.0	19.0	19.0	19.0	19.0	19.0
9-12	181	184	168	147	147.0	147.0	147.0	147.0	147.0	147.0	147.0
PK-12	280	252	229	198	198.0	198.0	198.0	198.0	198.0	198.0	198.0
Unmatched Students											
PK-2	2	1	1	2	2.0	2.0	2.0	2.0	2.0	2.0	2.0
3-5	1	0	1	1	1.0	1.0	1.0	1.0	1.0	1.0	1.0
6-8	0	2	1	3	3.0	3.0	3.0	3.0	3.0	3.0	3.0
9-12	5	2	1	0	0.0	0.0	0.0	0.0	0.0	0.0	0.0
PK-12	8	5	4	6	6.0	6.0	6.0	6.0	6.0	6.0	6.0
Total Students*											
PK-2	440	470	525	545	564.3	571.0	581.1	592.7	599.6	597.2	595.3
3-5	443	444	448	413	429.1	460.0	505.8	497.0	497.6	507.0	517.6
6-8	423	446	477	501	519.7	519.8	482.5	494.7	523.1	571.9	559.6
9-12	775	796	743	753	762.7	779.3	844.6	866.7	860.2	835.2	852.2
PK-12	2,081	2,156	2,193	2,212	2,275.8	2,330.1	2,414.0	2,451.1	2,480.5	2,511.3	2,524.7
Annual Change											
PK-2 Difference	30	55	20	19.3	6.7	10.1	11.6	6.9	-2.4	-1.9	
3-5 Difference	1	4	-35	16.1	30.9	45.8	-8.8	0.6	9.4	10.6	
6-8 Difference	23	31	24	18.7	0.1	-37.3	12.2	28.4	48.8	-12.3	
9-12 Difference	21	-53	10	9.7	16.6	65.3	22.1	-6.5	-25.0	17.0	
PK-12 Difference	75	37	19	63.8	54.3	83.8	37.1	29.4	30.8	13.4	
Notes											
Forecast based on student data as of 10/7/2020.											



SECTION FOUR – ATTENDANCE AREA PROJECTIONS BY RESIDENCE



PK-12 Student Distribution Map



School Projections by Residence

K-2 Student Resident Projection

Attendance Area Mountain Way ES											
	2017	2018	2019	2020	PROJECTED RESIDENT STUDENTS						
	2017	2018	2019	2020	2021	2022	2023	2024	2025	2026	2027
K	102	149	153	126	148.7	153.1	163.1	162.3	160.2	160.8	161.0
1	105	106	166	150	152.5	151.7	154.4	164.2	163.3	161.2	161.5
2	127	123	113	163	157.1	160.2	157.6	160.2	170.1	169.2	166.8

K-2	334	378	432	439	458.3	465.0	475.1	486.7	493.6	491.2	489.3
	Annual Change:				19.3	6.7	10.1	11.6	6.9	-2.4	-1.9

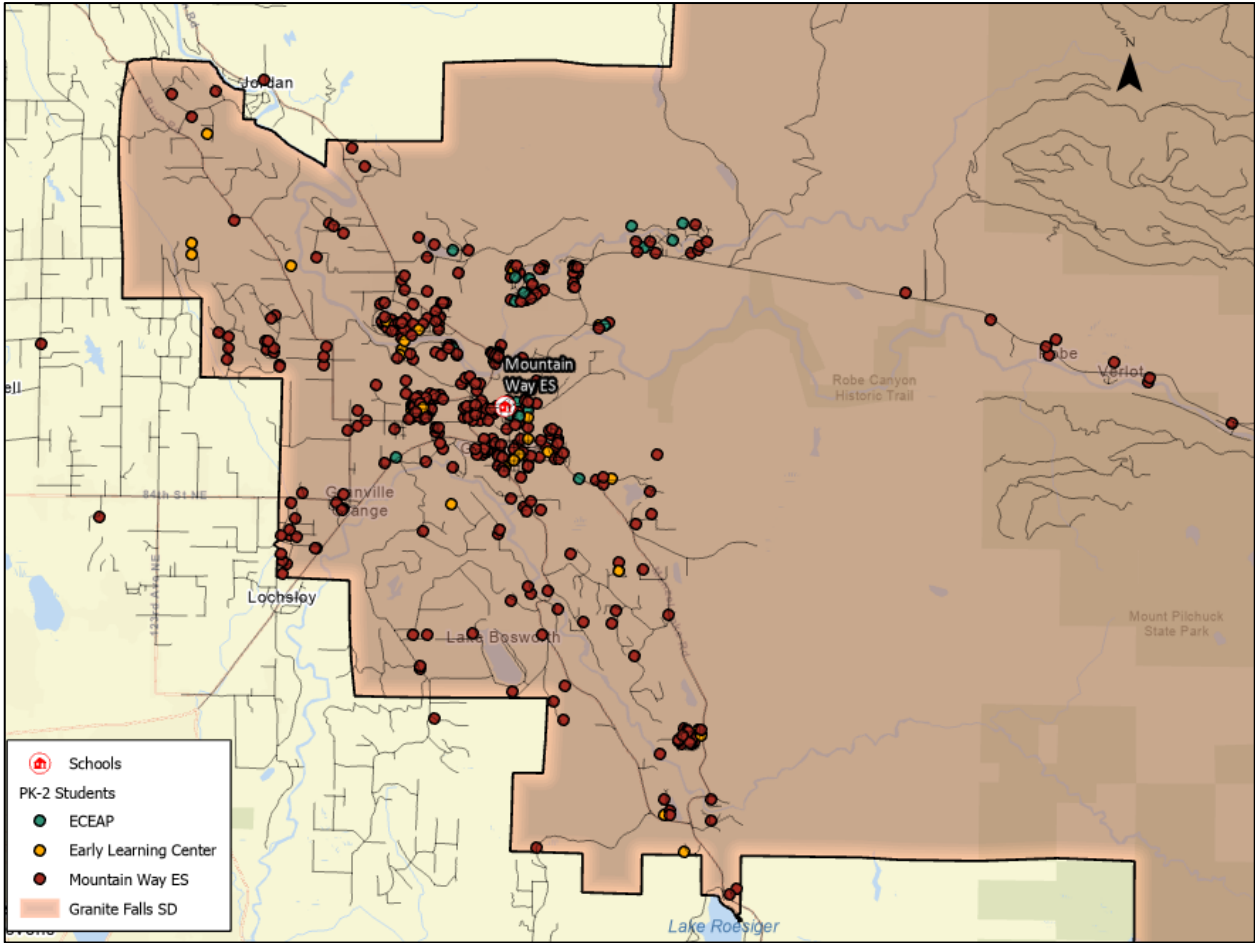
*Not included: 2 unmatched, 18 out of district students

—

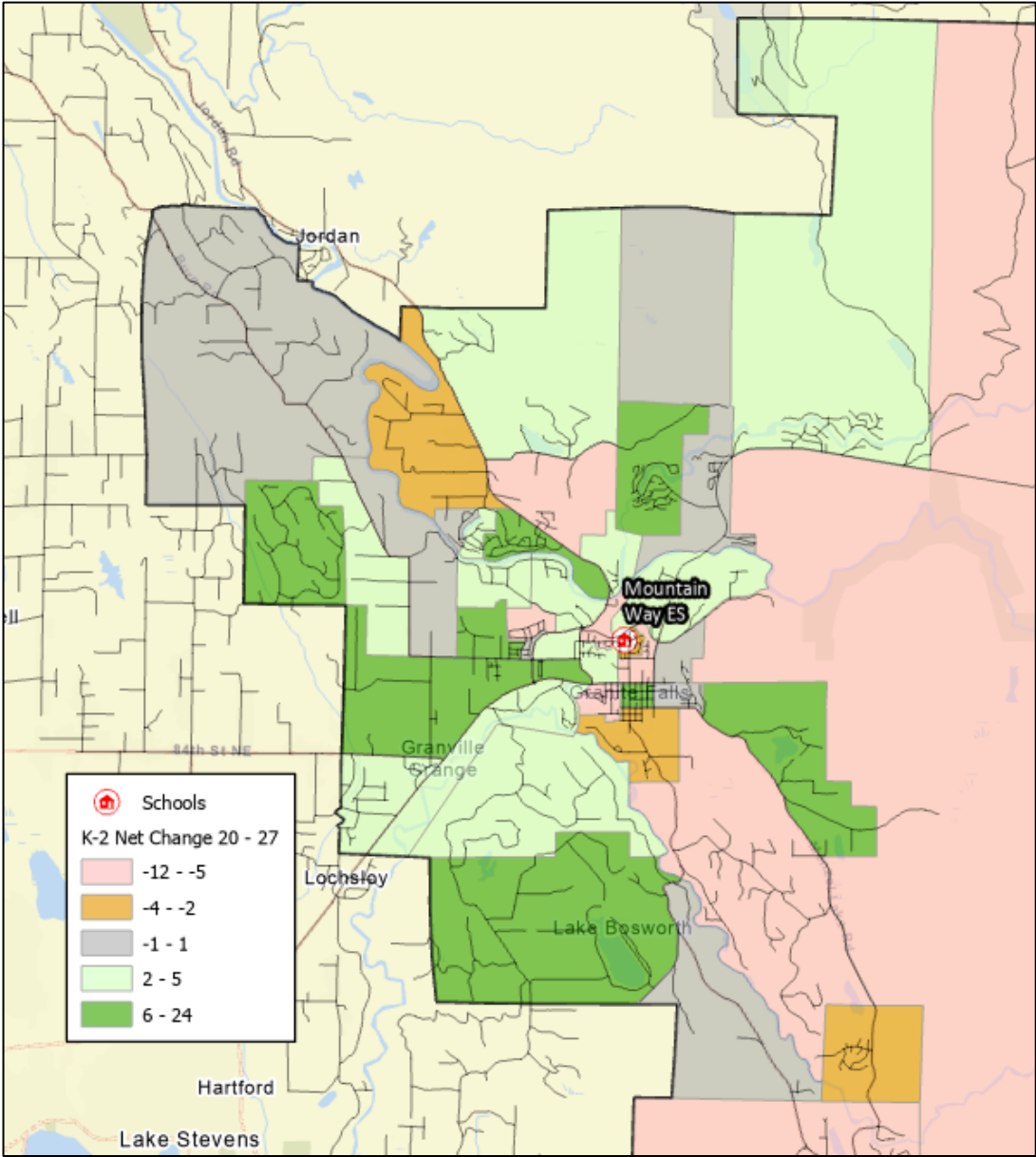
SCHOOL OF ENROLLMENT K-2

SCHOOL OF RESIDENCE	Attendance Area	Mountain Way ES
	Mountain Way ES	439
	Out of District Students	18
	Unmatched	2
	PreK	0
	Total Enrollment	459

Projections do not include out of district or unmatched students



K-2 Student Distribution



K-2 Net Change Fall 20 – Fall 27

3-5 Student Resident Projection

Attendance Area Monte Cristo ES											
					PROJECTED RESIDENT STUDENTS						
	<u>2017</u>	<u>2018</u>	<u>2019</u>	<u>2020</u>	<u>2021</u>	<u>2022</u>	<u>2023</u>	<u>2024</u>	<u>2025</u>	<u>2026</u>	<u>2027</u>
K	102	149	153	126	148.7	153.1	163.1	162.3	160.2	160.8	161.0
1	105	106	166	150	152.5	151.7	154.4	164.2	163.3	161.2	161.5
2	127	123	113	163	157.1	160.2	157.6	160.2	170.1	169.2	166.8
3	142	142	125	112	163.9	158.6	159.3	157.2	159.5	169.3	168.2
4	128	145	152	129	113.4	165.3	158.3	159.0	156.5	158.9	168.4
5	139	136	151	157	136.8	121.1	173.2	165.8	166.6	163.8	166.0

3-5	409	423	428	398	414.1	445.0	490.8	482.0	482.6	492.0	502.6
Annual Change 3-5:					16.1	30.9	45.8	-8.8	0.6	9.4	10.6

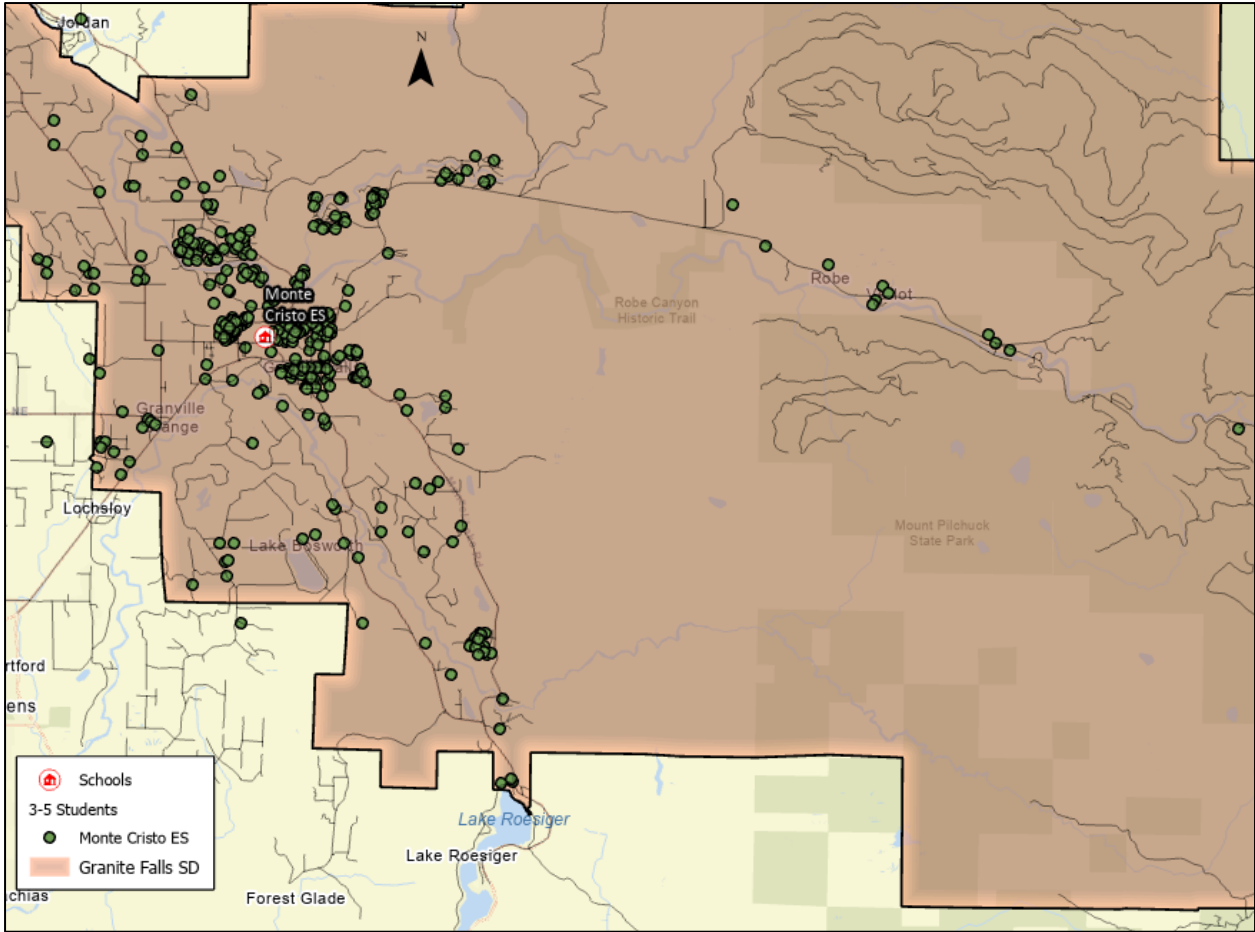
*Not included: 14 out of district, 1 unmatched student

3-5 Student Accounting Summary

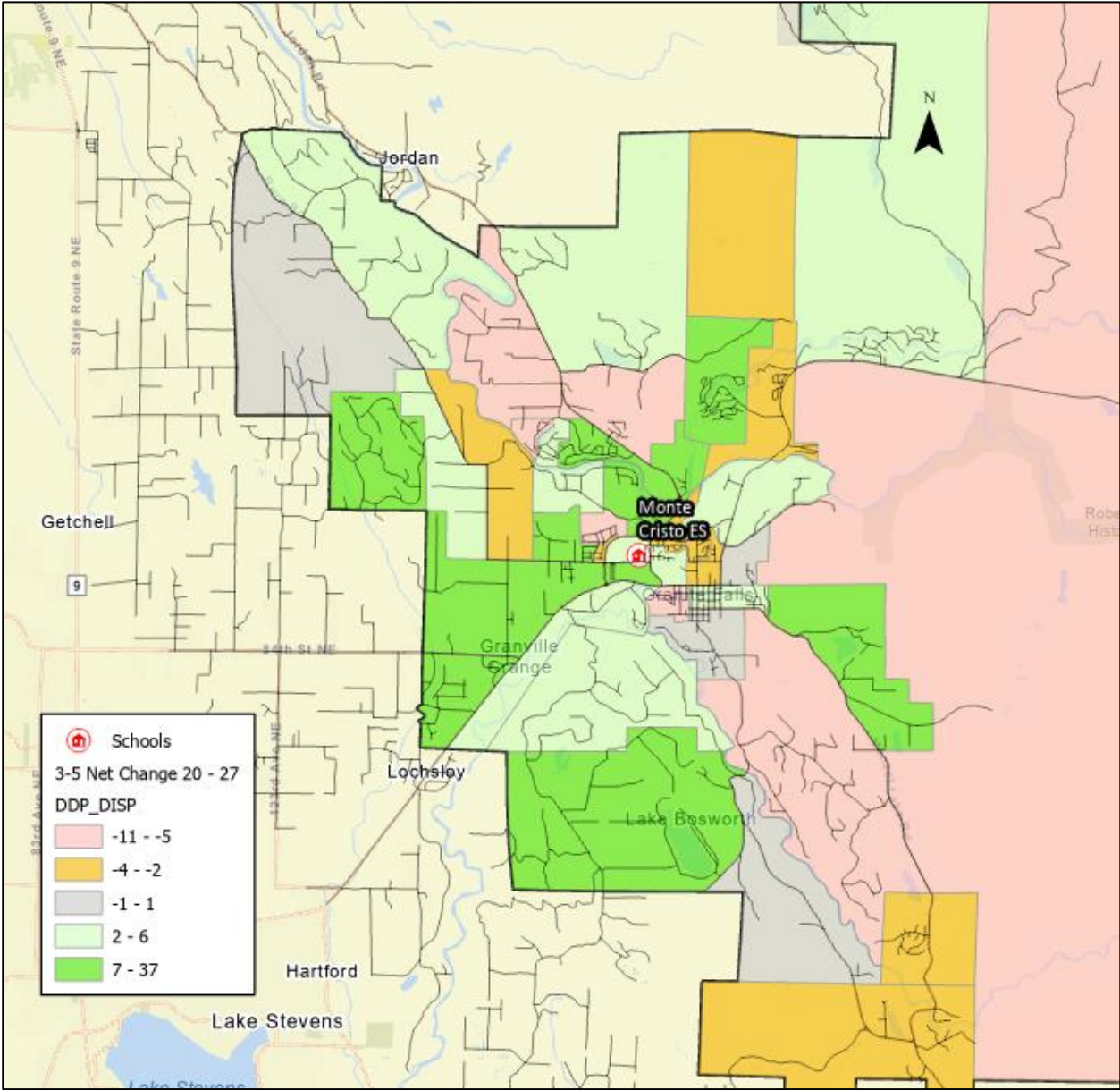
SCHOOL OF ENROLLMENT PK, 3-5

SCHOOL OF RESIDENCE	Attendance Area	Total Residence	Monte Cristo ES	ECEAP	Early Learning Center
	Monte Cristo ES	398	398	0	0
	Out of District Students	14	14	0	0
	Unmatched	1	1	0	0
	PreK	86	0	35	51
	Total Enrollment	499	413	35	51

Projections do not include out of district or unmatched students



3-5 Student Distribution



3-5 Net Change Fall 20 - Fall 27

6-8 Student Resident Projection

Attendance Area Granite Falls MS											
	<u>2017</u>	<u>2018</u>	<u>2019</u>	<u>2020</u>	PROJECTED RESIDENT STUDENTS						
	<u>2017</u>	<u>2018</u>	<u>2019</u>	<u>2020</u>	<u>2021</u>	<u>2022</u>	<u>2023</u>	<u>2024</u>	<u>2025</u>	<u>2026</u>	<u>2027</u>
K	102	149	153	126	148.7	153.1	163.1	162.3	160.2	160.8	161.0
1	105	106	166	150	152.5	151.7	154.4	164.2	163.3	161.2	161.5
2	127	123	113	163	157.1	160.2	157.6	160.2	170.1	169.2	166.8
3	142	142	125	112	163.9	158.6	159.3	157.2	159.5	169.3	168.2
4	128	145	152	129	113.4	165.3	158.3	159.0	156.5	158.9	168.4
5	139	136	151	157	136.8	121.1	173.2	165.8	166.6	163.8	166.0
6	125	157	144	163	167.5	146.8	128.5	183.1	175.0	174.9	172.8
7	116	144	158	155	170.0	175.1	152.3	133.3	189.3	181.1	179.5
8	147	119	152	161	160.2	175.9	179.7	156.3	136.8	193.9	185.3

6-8	388	420	454	479	497.7	497.8	460.5	472.7	501.1	549.9	537.6
	Annual Change:				18.7	0.1	-37.3	12.2	28.4	48.8	-12.3

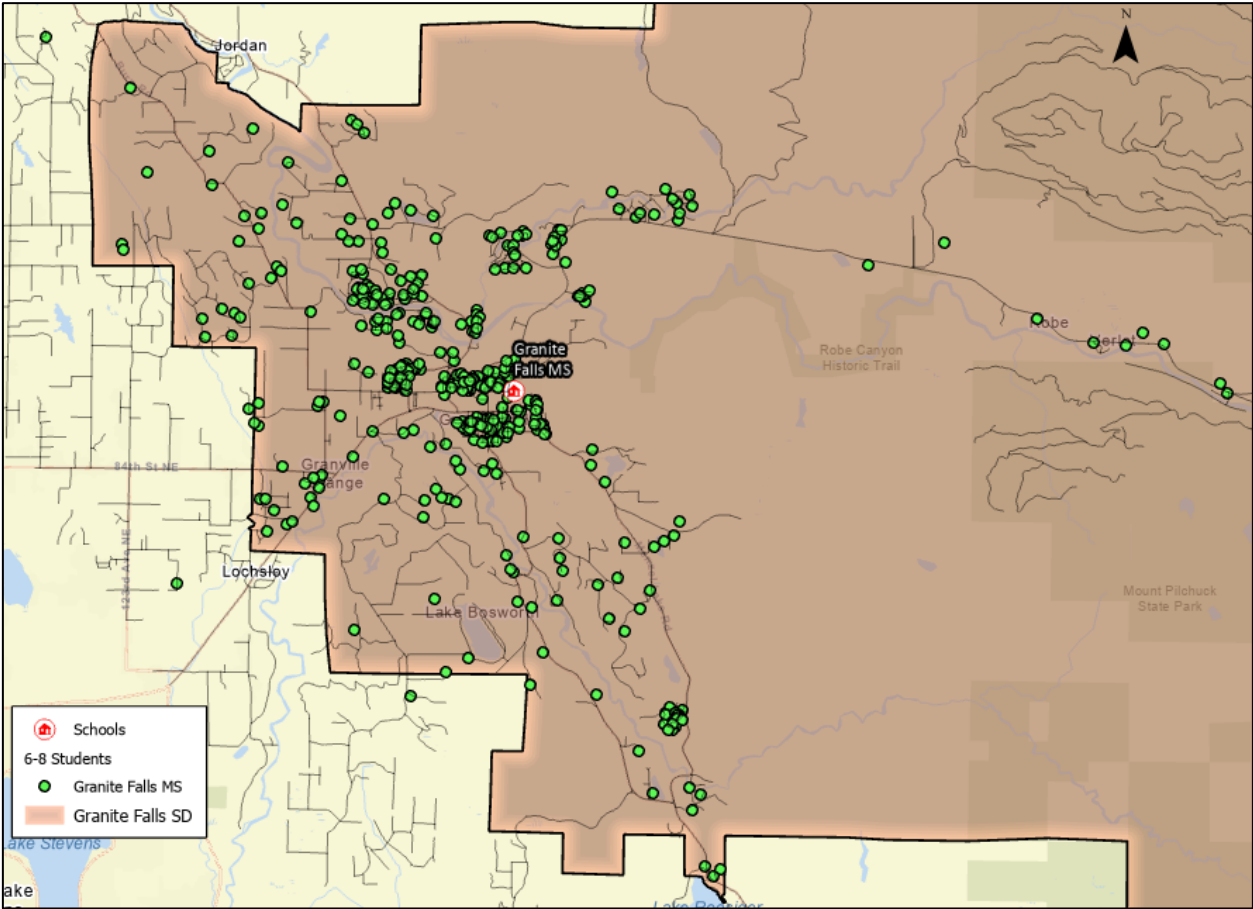
*Not included: 19 out of district, 3 unmatched

6-8 Student Accounting Summary

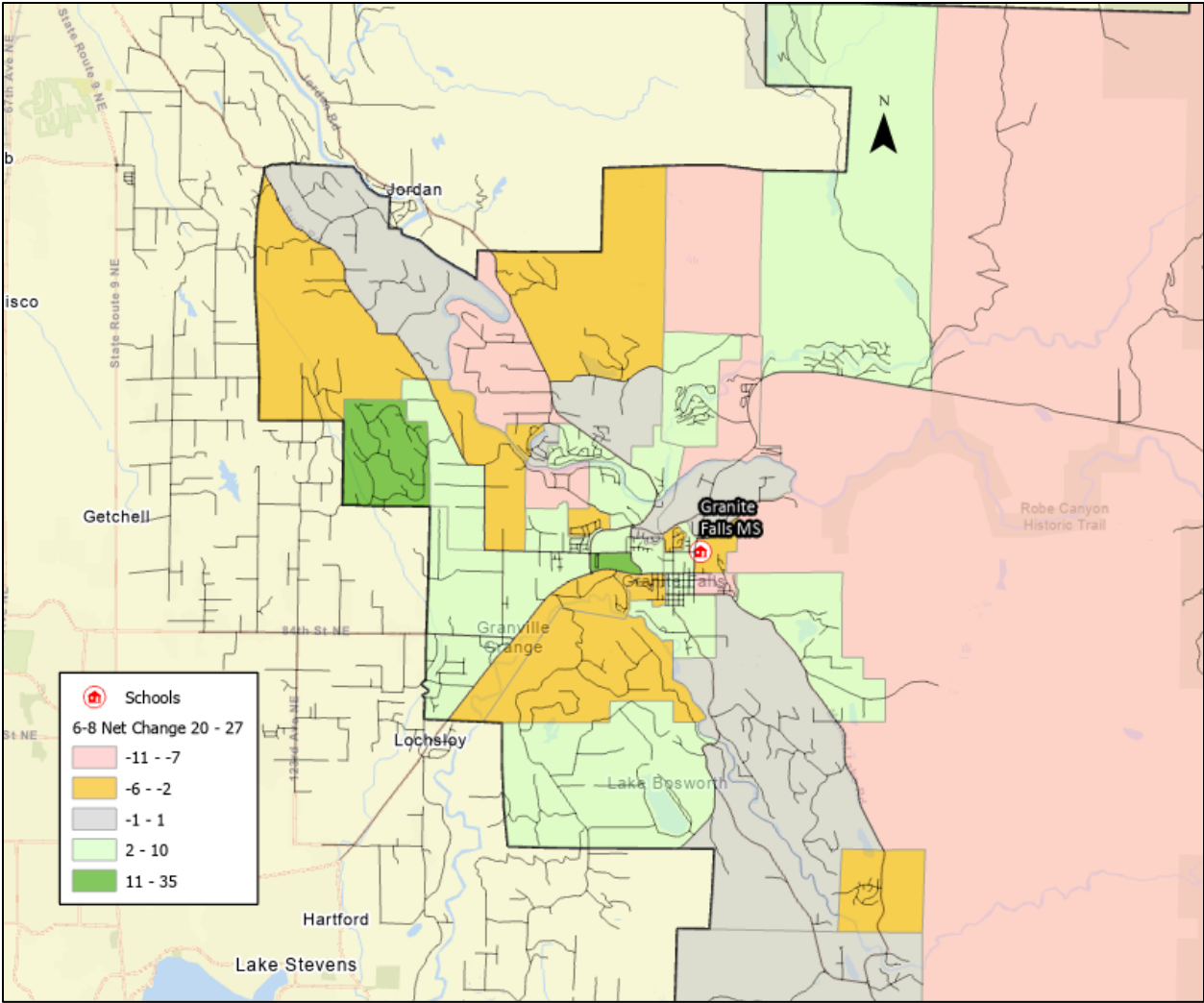
SCHOOL OF ENROLLMENT 6-8

SCHOOL OF RESIDENCE	Attendance Area	Total Residence	Granite Falls MS	Granite Falls HS
	Granite Falls MS	479	478	1
	Out of District Students	19	19	0
	Unmatched	3	3	0
	Total Enrollment	501	500	1

Projections do not include out of district or unmatched students



6-8 Student Distribution



6-8 Net Change Fall 20 - Fall 27

9-12 Student Resident Projection

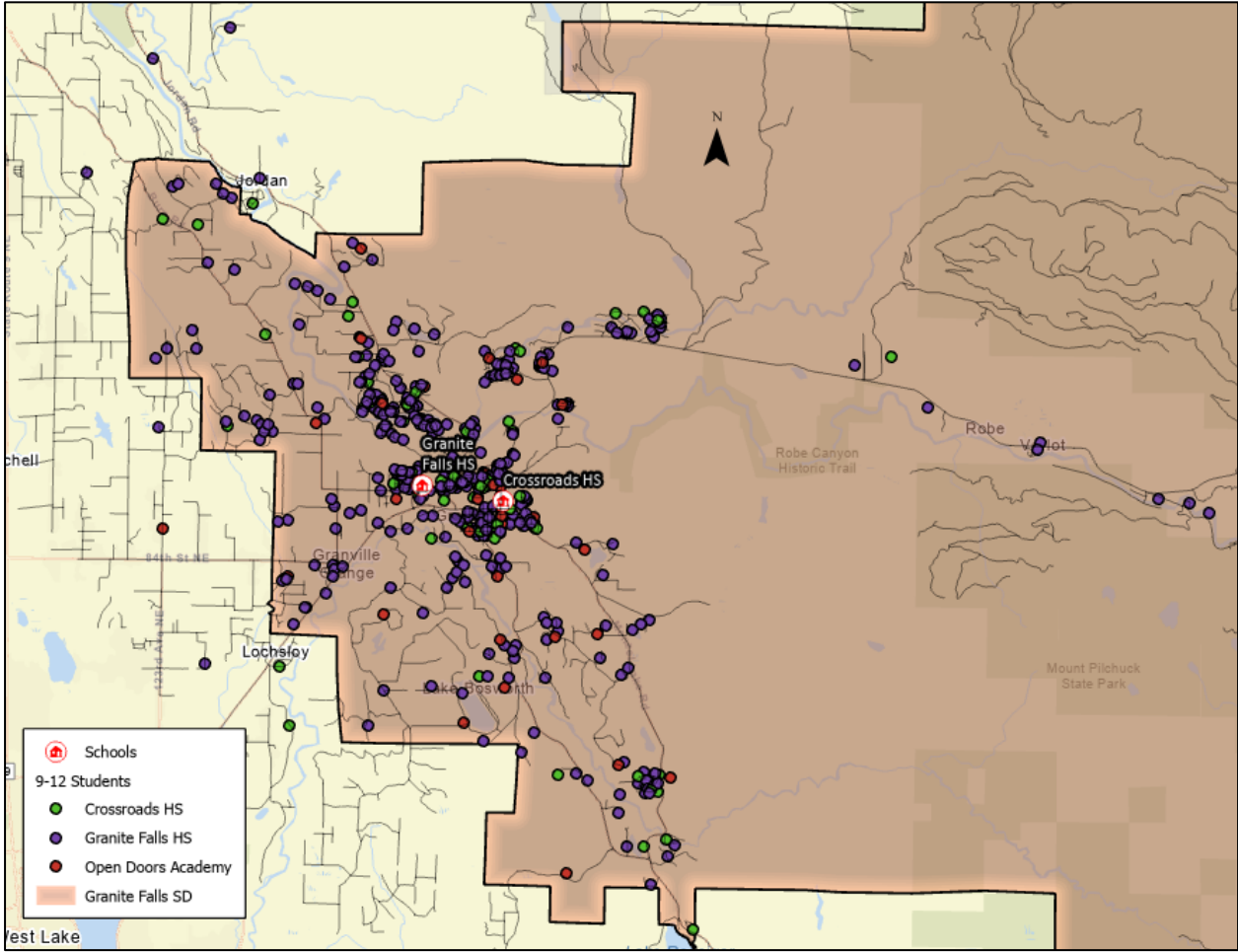
Attendance Area Granite Falls HS											
	2017	2018	2019	2020	PROJECTED RESIDENT STUDENTS						
	2017	2018	2019	2020	2021	2022	2023	2024	2025	2026	2027
K	102	149	153	126	148.7	153.1	163.1	162.3	160.2	160.8	161.0
1	105	106	166	150	152.5	151.7	154.4	164.2	163.3	161.2	161.5
2	127	123	113	163	157.1	160.2	157.6	160.2	170.1	169.2	166.8
3	142	142	125	112	163.9	158.6	159.3	157.2	159.5	169.3	168.2
4	128	145	152	129	113.4	165.3	158.3	159.0	156.5	158.9	168.4
5	139	136	151	157	136.8	121.1	173.2	165.8	166.6	163.8	166.0
6	125	157	144	163	167.5	146.8	128.5	183.1	175.0	174.9	172.8
7	116	144	158	155	170.0	175.1	152.3	133.3	189.3	181.1	179.5
8	147	119	152	161	160.2	175.9	179.7	156.3	136.8	193.9	185.3
9	139	157	118	162	167.2	166.6	181.9	185.6	161.5	141.4	200.1
10	139	149	157	119	164.9	170.4	169.0	184.3	188.0	163.6	143.2
11	154	145	158	158	122.7	169.8	174.5	172.9	188.5	192.3	167.3
12	157	159	141	167	160.9	125.5	172.2	176.9	175.2	190.9	194.6
9-12	589	610	574	606	615.7	632.3	697.6	719.7	713.2	688.2	705.2
Annual Change:					9.7	16.6	65.3	22.1	-6.5	-25.0	17.0

*Not included: 26 out of district

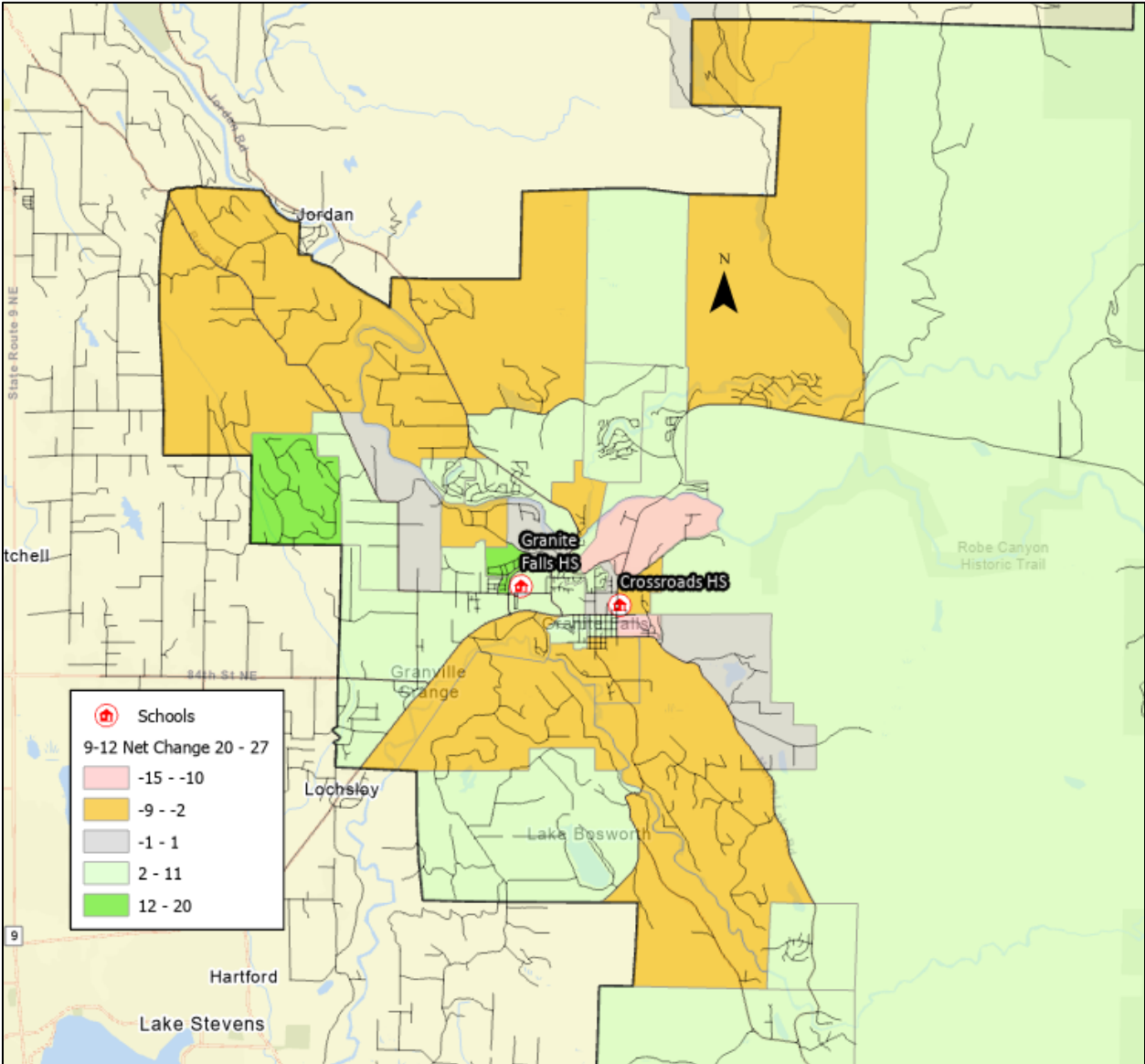
9-12 Student Accounting Summary

SCHOOL OF RESIDENCE	SCHOOL OF ENROLLMENT 9-12				
	Attendance Area	Total Residence	Granite Falls HS	Crossroads HS	Open Doors Academy
	Granite Falls HS	606	472	93	41
	Out of District Students	147	26	69	52
	Unmatched	0	0	0	0
	Total Enrollment	753	498	162	93

Projections do not include out of district or unmatched students



9-12 Student Distribution



9-12 Net Change Fall 20 – Fall 27



APPENDIX A – CAPTURE RATE STUDY

Estimated student capture rates are used to give the district a rough estimate of the school-age population of each attendance area compared to the number of GFSD students residing there. The school-age population is derived from overlaying GFSD attendance areas onto ESRI's estimated population by census block data. Since GFSD has district-wide school boundaries, DDP used capture rates based on the district's core grade groupings.

It's important to remember this is an estimated number of school-age students residing in each area. It is based upon census data and ESRI models. Areas with recent growth have a higher margin of error. Capture rates over 100% help to show within the given area the District enrolls most if not all students.

The Granite Falls School District is capturing approximately 78% of the K-12 school-age population within its boundaries.

Student Capture Rate by Grade Range				
Grade Range	ESRI 2021 Estimated Grade K-12 (Age 5-17) Population ¹	2020/21 Students Enrolled in GFSD ²	% Population	Potential Students
K-2	517	439	85%	78
3-5	562	398	71%	164
6-8	596	479	80%	117
9-12	805	606	75%	199
GFSD K-12	2,480	1,922	78%	558

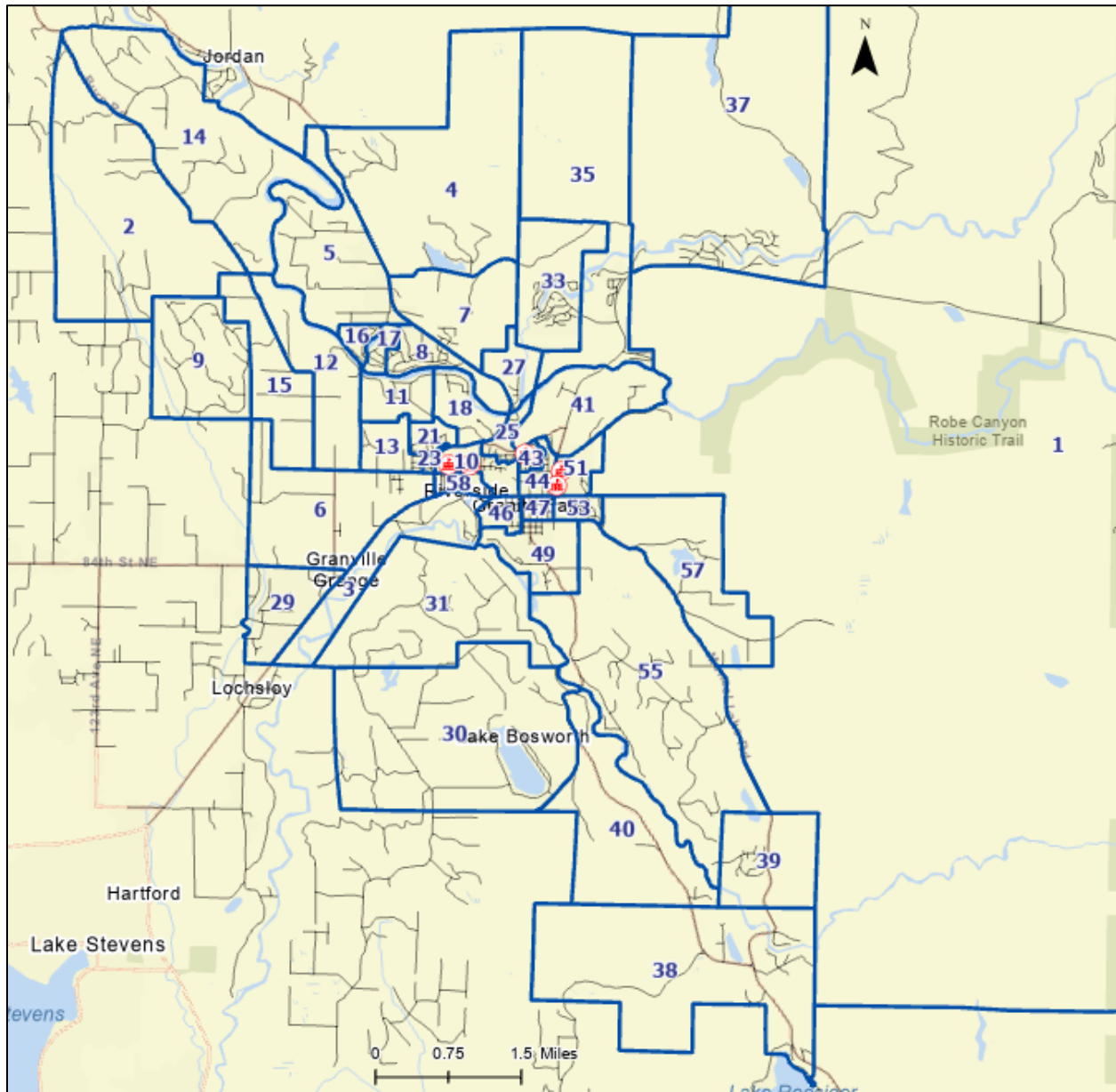
1. ESRI Estimate

2. Students residing in Granite Falls SD and enrolled in a Granite Falls SD school. Including Special Education Students

3. Does not include Granite Falls SD students residing out of the district boundaries



APPENDIX B – STUDY AREA MAP AND PROJECTIONS





APPENDIX B – STUDY AREA PROJECTIONS

Study Area 1		Projection Date 10/7/2020						
	CURRENT	PROJECTED RESIDENT STUDENTS						
	2020	2021	2022	2023	2024	2025	2026	2027
K	1.0	1.2	1.2	1.3	1.2	1.2	1.2	1.2
1	5.0	1.0	1.2	1.2	1.3	1.2	1.2	1.2
2	5.0	5.2	1.0	1.2	1.2	1.3	1.3	1.3
3	3.0	4.9	5.1	1.0	1.2	1.2	1.3	1.3
4	6.0	3.0	4.9	5.0	1.0	1.2	1.2	1.3
5	3.0	6.2	3.1	5.1	5.2	1.0	1.2	1.2
6	4.0	3.2	6.6	3.2	5.4	5.5	1.1	1.3
7	7.0	4.1	3.2	6.7	3.3	5.5	5.7	1.1
8	4.0	7.1	4.2	3.3	6.9	3.4	5.6	5.8
9	4.0	4.1	7.4	4.3	3.4	7.1	3.5	5.8
10	2.0	4.0	4.2	7.4	4.4	3.4	7.2	3.5
11	2.0	2.0	4.1	4.2	7.6	4.5	3.5	7.3
12	3.0	2.0	2.1	4.2	4.3	7.7	4.5	3.5
K-2	11.0	7.4	3.4	3.7	3.7	3.7	3.7	3.7
3-5	12.0	14.1	13.1	11.1	7.4	3.4	3.7	3.8
6-8	15.0	14.4	14.0	13.2	15.6	14.4	12.4	8.2
9-12	11.0	12.1	17.8	20.1	19.7	22.7	18.7	20.1
K-12	49.0	48.0	48.3	48.1	46.4	44.2	38.5	35.8

Study Area 2		Projection Date 10/7/2020						
	CURRENT	PROJECTED RESIDENT STUDENTS						
	2020	2021	2022	2023	2024	2025	2026	2027
K	0.0	0.0	0.0	0.2	0.1	0.1	0.1	0.1
1	1.0	0.0	0.0	0.2	0.2	0.1	0.1	0.1
2	0.0	1.0	0.0	0.2	0.2	0.2	0.1	0.1
3	0.0	0.0	1.0	0.2	0.2	0.2	0.2	0.1
4	0.0	0.0	0.0	1.2	0.2	0.2	0.2	0.2
5	0.0	0.0	0.0	0.2	1.2	0.2	0.2	0.2
6	1.0	0.0	0.0	0.2	0.2	1.3	0.2	0.2
7	0.0	1.0	0.0	0.1	0.2	0.2	1.3	0.2
8	6.0	0.0	1.1	0.1	0.1	0.2	0.2	1.3
9	1.0	6.2	0.0	1.2	0.1	0.1	0.2	0.2
10	1.0	1.0	6.2	0.1	1.2	0.1	0.1	0.2
11	1.0	1.0	1.0	6.4	0.1	1.2	0.1	0.1
12	3.0	1.0	1.0	1.1	6.5	0.1	1.2	0.1
K-2	1.0	1.0	0.0	0.6	0.5	0.4	0.3	0.3
3-5	0.0	0.0	1.0	1.6	1.6	0.6	0.6	0.5
6-8	7.0	1.0	1.1	0.4	0.5	1.7	1.7	1.7
9-12	6.0	9.2	8.2	8.8	7.9	1.5	1.6	0.6
K-12	14.0	11.2	10.3	11.4	10.5	4.2	4.2	3.1

Study Area 3		Projection Date 10/7/2020						
	CURRENT	PROJECTED RESIDENT STUDENTS						
	2020	2021	2022	2023	2024	2025	2026	2027
K	2.0	2.3	2.4	2.5	2.5	2.5	2.5	2.5
1	2.0	2.0	2.3	2.4	2.5	2.5	2.5	2.5
2	2.0	2.1	2.1	2.4	2.4	2.6	2.6	2.5
3	2.0	2.0	2.0	2.0	2.4	2.4	2.6	2.5
4	2.0	2.0	2.0	2.0	2.0	2.3	2.4	2.5
5	0.0	2.1	2.1	2.0	2.1	2.1	2.4	2.5
6	4.0	0.0	2.2	2.2	2.1	2.2	2.2	2.6
7	4.0	4.1	0.0	2.2	2.2	2.2	2.3	2.3
8	4.0	4.1	4.2	0.0	2.3	2.3	2.2	2.3
9	4.0	4.1	4.2	4.3	0.0	2.4	2.3	2.3
10	3.0	4.0	4.2	4.2	4.4	0.0	2.4	2.4
11	2.0	3.1	4.1	4.2	4.3	4.5	0.0	2.4
12	1.0	2.0	3.1	4.2	4.3	4.4	4.5	0.0
K-2	6.0	6.4	6.8	7.3	7.4	7.6	7.6	7.5
3-5	4.0	6.1	6.1	6.0	6.5	6.8	7.4	7.5
6-8	12.0	8.2	6.4	4.4	6.6	6.7	6.7	7.2
9-12	10.0	13.2	15.6	16.9	13.0	11.3	9.2	7.1
K-12	32.0	33.9	34.9	34.6	33.5	32.4	30.9	29.3



Fall 2020/21 Demographic Report

Study Area 4		Projection Date 10/7/2020						
	CURRENT	PROJECTED RESIDENT STUDENTS						
	2020	2021	2022	2023	2024	2025	2026	2027
K	2.0	2.3	2.4	2.5	2.5	2.5	2.5	2.5
1	1.0	2.0	2.3	2.4	2.5	2.5	2.5	2.5
2	2.0	1.0	2.1	2.4	2.4	2.6	2.6	2.5
3	1.0	2.0	1.0	2.0	2.4	2.4	2.6	2.5
4	1.0	1.0	2.0	1.0	2.0	2.3	2.4	2.5
5	2.0	1.0	1.0	2.0	1.0	2.1	2.4	2.5
6	3.0	2.1	1.1	1.1	2.1	1.1	2.2	2.6
7	4.0	3.1	2.2	1.1	1.1	2.2	1.1	2.3
8	2.0	4.1	3.2	2.2	1.1	1.1	2.2	1.2
9	5.0	2.1	4.2	3.2	2.3	1.2	1.2	2.3
10	2.0	5.1	2.1	4.2	3.3	2.3	1.2	1.2
11	1.0	2.0	5.2	2.1	4.3	3.3	2.3	1.2
12	1.0	1.0	2.1	5.2	2.1	4.4	3.4	2.4
K-2	5.0	5.3	6.8	7.3	7.4	7.6	7.6	7.5
3-5	4.0	4.0	4.0	5.0	5.4	6.8	7.4	7.5
6-8	9.0	9.3	6.5	4.4	4.3	4.4	5.5	6.1
9-12	9.0	10.2	13.6	14.7	12.0	11.2	8.1	7.1
K-12	27.0	28.8	30.9	31.4	29.1	30.0	28.6	28.2

Study Area 5		Projection Date 10/7/2020						
	CURRENT	PROJECTED RESIDENT STUDENTS						
	2020	2021	2022	2023	2024	2025	2026	2027
K	0.0	0.0	0.0	0.0	0.0	0.0	0.0	0.0
1	1.0	0.0	0.0	0.0	0.0	0.0	0.0	0.0
2	3.0	1.0	0.0	0.0	0.0	0.0	0.0	0.0
3	2.0	3.0	1.0	0.0	0.0	0.0	0.0	0.0
4	0.0	2.0	2.9	1.0	0.0	0.0	0.0	0.0
5	6.0	0.0	2.1	3.1	1.0	0.0	0.0	0.0
6	3.0	6.3	0.0	2.2	3.2	1.1	0.0	0.0
7	3.0	3.1	6.5	0.0	2.2	3.3	1.1	0.0
8	4.0	3.1	3.2	6.6	0.0	2.3	3.4	1.2
9	3.0	4.1	3.2	3.2	6.8	0.0	2.3	3.5
10	5.0	3.0	4.2	3.2	3.3	6.9	0.0	2.4
11	5.0	5.1	3.1	4.2	3.2	3.3	7.0	0.0
12	7.0	5.1	5.2	3.1	4.3	3.3	3.4	7.1
K-2	4.0	1.0	0.0	0.0	0.0	0.0	0.0	0.0
3-5	8.0	5.0	6.0	4.1	1.0	0.0	0.0	0.0
6-8	10.0	12.5	9.7	8.8	5.4	6.7	4.5	1.2
9-12	20.0	17.3	15.7	13.7	17.6	13.5	12.7	13.0
K-12	42.0	35.8	31.4	26.6	24.0	20.2	17.2	14.2

Study Area 6		Projection Date 10/7/2020						
	CURRENT	PROJECTED RESIDENT STUDENTS						
	2020	2021	2022	2023	2024	2025	2026	2027
K	3.0	4.5	5.1	4.9	4.8	4.8	4.8	4.8
1	2.0	4.0	5.5	5.1	4.9	4.8	4.8	4.8
2	3.0	3.1	5.1	5.6	5.2	5.0	5.0	4.9
3	1.0	4.0	4.0	5.1	5.6	5.2	4.9	4.9
4	1.0	2.0	4.9	4.0	5.0	5.5	5.1	4.9
5	3.0	2.1	3.1	5.1	4.2	5.2	5.7	5.3
6	2.0	4.2	3.2	3.2	5.4	4.4	5.5	6.0
7	3.0	2.9	5.2	3.3	3.3	5.5	4.5	5.7
8	2.0	3.9	3.8	5.3	3.4	3.4	5.6	4.6
9	2.0	2.6	4.5	3.9	5.4	3.5	3.5	5.8
10	2.0	2.5	3.1	4.6	3.9	5.5	3.5	3.5
11	1.0	2.6	3.1	3.2	4.7	4.0	5.6	3.6
12	4.0	1.5	3.1	3.1	3.2	4.7	4.0	5.6
K-2	8.0	11.6	15.7	15.6	14.9	14.6	14.6	14.5
3-5	5.0	8.1	12.0	14.2	14.8	15.9	15.7	15.1
6-8	7.0	11.0	12.2	11.8	12.1	13.3	15.6	16.3
9-12	9.0	9.2	13.8	14.8	17.2	17.7	16.6	18.5
K-12	29.0	39.9	53.7	56.4	59.0	61.5	62.5	64.4



Fall 2020/21 Demographic Report

Study Area 7		Projection Date 10/7/2020						
CURRENT		PROJECTED RESIDENT STUDENTS						
	2020	2021	2022	2023	2024	2025	2026	2027
K	1.0	1.2	1.2	1.3	1.2	1.2	1.2	1.2
1	5.0	1.0	1.2	1.2	1.3	1.2	1.2	1.2
2	5.0	5.2	1.0	1.2	1.2	1.3	1.3	1.3
3	3.0	4.9	5.1	1.0	1.2	1.2	1.3	1.3
4	2.0	3.0	4.9	5.0	1.0	1.2	1.2	1.3
5	4.0	2.1	3.1	5.1	5.2	1.0	1.2	1.2
6	3.0	4.2	2.2	3.2	5.4	5.5	1.1	1.3
7	3.0	3.1	4.3	2.2	3.3	5.5	5.7	1.1
8	1.0	3.1	3.2	4.4	2.3	3.4	5.6	5.8
9	3.0	1.0	3.2	3.2	4.5	2.4	3.5	5.8
10	1.0	3.0	1.0	3.2	3.3	4.6	2.4	3.5
11	2.0	1.0	3.1	1.1	3.2	3.3	4.7	2.4
12	3.0	2.0	1.0	3.1	1.1	3.3	3.4	4.7
K-2	11.0	7.4	3.4	3.7	3.7	3.7	3.7	3.7
3-5	9.0	10.0	13.1	11.1	7.4	3.4	3.7	3.8
6-8	7.0	10.4	9.7	9.8	11.0	14.4	12.4	8.2
9-12	9.0	7.0	8.3	10.6	12.1	13.6	14.0	16.4
K-12	36.0	34.8	34.5	35.2	34.2	35.1	33.8	32.1

Study Area 8		Projection Date 10/7/2020						
CURRENT		PROJECTED RESIDENT STUDENTS						
	2020	2021	2022	2023	2024	2025	2026	2027
K	8.0	9.3	9.4	10.1	10.0	9.8	9.8	9.8
1	7.0	8.0	9.3	9.4	10.1	10.0	9.8	9.8
2	8.0	7.2	8.2	9.6	9.7	10.4	10.3	10.1
3	5.0	7.9	7.1	8.2	9.5	9.6	10.3	10.2
4	6.0	4.9	7.8	7.1	8.1	9.4	9.5	10.2
5	4.0	6.2	5.1	8.2	7.3	8.4	9.7	9.9
6	6.0	4.2	6.6	5.4	8.6	7.7	8.8	10.2
7	10.0	6.2	4.3	6.7	5.6	8.8	7.9	9.1
8	5.0	10.2	6.3	4.4	6.9	5.7	9.0	8.1
9	6.0	5.2	10.5	6.5	4.5	7.1	5.8	9.3
10	6.0	6.1	5.2	10.6	6.6	4.6	7.2	5.9
11	6.0	6.1	6.2	5.3	10.8	6.7	4.7	7.3
12	5.0	6.1	6.2	6.2	5.4	10.9	6.8	4.7
K-2	23.0	24.5	26.9	29.1	29.8	30.2	29.9	29.7
3-5	15.0	19.0	20.0	23.5	24.9	27.4	29.5	30.3
6-8	21.0	20.6	17.2	16.5	21.1	22.2	25.7	27.4
9-12	23.0	23.5	28.1	28.6	27.3	29.3	24.5	27.2
K-12	82.0	87.6	92.2	97.7	103.1	109.1	109.6	114.6

Study Area 9		Projection Date 10/7/2020						
CURRENT		PROJECTED RESIDENT STUDENTS						
	2020	2021	2022	2023	2024	2025	2026	2027
K	8.0	9.4	10.5	11.6	12.0	12.4	12.9	13.2
1	5.0	8.1	10.4	11.4	12.6	13.0	13.4	13.6
2	4.0	5.3	9.3	11.6	12.7	13.9	14.4	14.5
3	3.0	4.1	6.2	10.2	12.5	13.6	14.7	15.0
4	4.0	3.1	5.0	7.0	11.0	13.3	14.4	15.3
5	2.0	4.3	4.2	6.2	8.3	12.5	14.8	15.7
6	0.0	2.2	5.5	5.4	7.5	9.7	14.1	16.3
7	5.0	0.1	3.1	6.5	6.4	8.5	10.8	15.1
8	3.0	5.2	0.9	3.9	7.4	7.3	9.5	11.7
9	5.0	3.2	5.9	1.4	4.6	8.1	8.0	10.1
10	5.0	5.1	3.7	6.4	1.9	5.1	8.7	8.5
11	3.0	5.2	5.7	4.3	7.0	2.5	5.7	9.2
12	1.0	3.1	5.7	6.3	4.8	7.6	3.0	6.2
K-2	17.0	22.8	30.2	34.6	37.3	39.3	40.7	41.3
3-5	9.0	11.5	15.4	23.4	31.8	39.4	43.9	46.0
6-8	8.0	7.5	9.5	15.8	21.3	25.5	34.4	43.1
9-12	14.0	16.6	21.0	18.4	18.3	23.3	25.4	34.0
K-12	48.0	58.4	76.1	92.2	108.7	127.5	144.4	164.4



Fall 2020/21 Demographic Report

Study Area 10		Projection Date 10/7/2020						
CURRENT		PROJECTED RESIDENT STUDENTS						
	2020	2021	2022	2023	2024	2025	2026	2027
K	5.0	5.8	5.9	6.3	6.2	6.2	6.2	6.2
1	6.0	5.0	5.8	5.9	6.3	6.2	6.2	6.2
2	6.0	6.2	5.2	6.0	6.1	6.5	6.4	6.3
3	2.0	5.9	6.1	5.1	5.9	6.0	6.4	6.4
4	4.0	2.0	5.9	6.1	5.0	5.9	6.0	6.4
5	8.0	4.2	2.1	6.1	6.3	5.2	6.1	6.2
6	2.0	8.4	4.4	2.2	6.4	6.6	5.5	6.4
7	6.0	2.1	8.7	4.5	2.2	6.6	6.8	5.7
8	5.0	6.1	2.1	8.8	4.6	2.3	6.7	6.9
9	6.0	5.2	6.3	2.2	9.1	4.7	2.3	6.9
10	3.0	6.1	5.2	6.4	2.2	9.2	4.8	2.4
11	5.0	3.1	6.2	5.3	6.5	2.2	9.4	4.9
12	6.0	5.1	3.1	6.2	5.4	6.6	2.3	9.5
K-2	17.0	17.0	16.9	18.2	18.6	18.9	18.8	18.7
3-5	14.0	12.1	14.1	17.3	17.2	17.1	18.5	19.0
6-8	13.0	16.6	15.2	15.5	13.2	15.5	19.0	19.0
9-12	20.0	19.5	20.8	20.1	23.2	22.7	18.8	23.7
K-12	64.0	65.2	67.0	71.1	72.2	74.2	75.1	80.4

Study Area 11		Projection Date 10/7/2020						
CURRENT		PROJECTED RESIDENT STUDENTS						
	2020	2021	2022	2023	2024	2025	2026	2027
K	2.0	2.3	2.4	2.5	2.5	2.5	2.5	2.5
1	0.0	2.0	2.3	2.4	2.5	2.5	2.5	2.5
2	1.0	0.0	2.1	2.4	2.4	2.6	2.6	2.5
3	0.0	1.0	0.0	2.0	2.4	2.4	2.6	2.5
4	3.0	0.0	1.0	0.0	2.0	2.3	2.4	2.5
5	2.0	3.1	0.0	1.0	0.0	2.1	2.4	2.5
6	6.0	2.1	3.3	0.0	1.1	0.0	2.2	2.6
7	6.0	6.2	2.2	3.4	0.0	1.1	0.0	2.3
8	4.0	6.1	6.3	2.2	3.4	0.0	1.1	0.0
9	4.0	4.1	6.3	6.5	2.3	3.5	0.0	1.2
10	3.0	4.0	4.2	6.4	6.6	2.3	3.6	0.0
11	3.0	3.1	4.1	4.2	6.5	6.7	2.3	3.7
12	2.0	3.0	3.1	4.2	4.3	6.6	6.8	2.4
K-2	3.0	4.3	6.8	7.3	7.4	7.6	7.6	7.5
3-5	5.0	4.1	1.0	3.0	4.4	6.8	7.4	7.5
6-8	16.0	14.4	11.8	5.6	4.5	1.1	3.3	4.9
9-12	12.0	14.2	17.7	21.3	19.7	19.1	12.7	7.3
K-12	36.0	37.0	37.3	37.2	36.0	34.6	31.0	27.2

Study Area 12		Projection Date 10/7/2020						
CURRENT		PROJECTED RESIDENT STUDENTS						
	2020	2021	2022	2023	2024	2025	2026	2027
K	0.0	0.0	0.0	0.0	0.0	0.0	0.0	0.0
1	0.0	0.0	0.0	0.0	0.0	0.0	0.0	0.0
2	1.0	0.0	0.0	0.0	0.0	0.0	0.0	0.0
3	0.0	1.0	0.0	0.0	0.0	0.0	0.0	0.0
4	2.0	0.0	1.0	0.0	0.0	0.0	0.0	0.0
5	0.0	2.1	0.0	1.0	0.0	0.0	0.0	0.0
6	1.0	0.0	2.2	0.0	1.1	0.0	0.0	0.0
7	4.0	1.0	0.0	2.2	0.0	1.1	0.0	0.0
8	0.0	4.1	1.1	0.0	2.3	0.0	1.1	0.0
9	2.0	0.0	4.2	1.1	0.0	2.4	0.0	1.2
10	1.0	2.0	0.0	4.2	1.1	0.0	2.4	0.0
11	2.0	1.0	2.1	0.0	4.3	1.1	0.0	2.4
12	0.0	2.0	1.0	2.1	0.0	4.4	1.1	0.0
K-2	1.0	0.0	0.0	0.0	0.0	0.0	0.0	0.0
3-5	2.0	3.1	1.0	1.0	0.0	0.0	0.0	0.0
6-8	5.0	5.1	3.3	2.2	3.4	1.1	1.1	0.0
9-12	5.0	5.0	7.3	7.4	5.4	7.9	3.5	3.6
K-12	13.0	13.2	11.6	10.6	8.8	9.0	4.6	3.6



Fall 2020/21 Demographic Report

Study Area 13		Projection Date 10/7/2020						
	CURRENT	PROJECTED RESIDENT STUDENTS						
	2020	2021	2022	2023	2024	2025	2026	2027
K	5.0	5.8	5.9	6.3	6.2	6.2	6.2	6.2
1	3.0	5.0	5.8	5.9	6.3	6.2	6.2	6.2
2	2.0	3.1	5.2	6.0	6.1	6.5	6.4	6.3
3	3.0	2.0	3.1	5.1	5.9	6.0	6.4	6.4
4	3.0	3.0	2.0	3.0	5.0	5.9	6.0	6.4
5	6.0	3.1	3.1	2.0	3.1	5.2	6.1	6.2
6	4.0	6.3	3.3	3.2	2.1	3.3	5.5	6.4
7	4.0	4.1	6.5	3.4	3.3	2.2	3.4	5.7
8	4.0	4.1	4.2	6.6	3.4	3.4	2.2	3.5
9	1.0	4.1	4.2	4.3	6.8	3.5	3.5	2.3
10	1.0	1.0	4.2	4.2	4.4	6.9	3.6	3.5
11	1.0	1.0	1.0	4.2	4.3	4.5	7.0	3.7
12	3.0	1.0	1.0	1.0	4.3	4.4	4.5	7.1
K-2	10.0	13.9	16.9	18.2	18.6	18.9	18.8	18.7
3-5	12.0	8.1	8.2	10.1	14.0	17.1	18.5	19.0
6-8	12.0	14.5	14.0	13.2	8.8	8.9	11.1	15.6
9-12	6.0	7.1	10.4	13.7	19.8	19.3	18.6	16.6
K-12	40.0	43.6	49.5	55.2	61.2	64.2	67.0	69.9

Study Area 14		Projection Date 10/7/2020						
	CURRENT	PROJECTED RESIDENT STUDENTS						
	2020	2021	2022	2023	2024	2025	2026	2027
K	1.0	1.2	1.2	1.3	1.2	1.2	1.2	1.2
1	0.0	1.0	1.2	1.2	1.3	1.2	1.2	1.2
2	2.0	0.0	1.0	1.2	1.2	1.3	1.3	1.3
3	1.0	2.0	0.0	1.0	1.2	1.2	1.3	1.3
4	0.0	1.0	2.0	0.0	1.0	1.2	1.2	1.3
5	1.0	0.0	1.0	2.0	0.0	1.0	1.2	1.2
6	2.0	1.0	0.0	1.1	2.1	0.0	1.1	1.3
7	1.0	2.1	1.1	0.0	1.1	2.2	0.0	1.1
8	0.0	1.0	2.1	1.1	0.0	1.1	2.2	0.0
9	3.0	0.0	1.1	2.2	1.1	0.0	1.2	2.3
10	2.0	3.0	0.0	1.1	2.2	1.1	0.0	1.2
11	2.0	2.0	3.1	0.0	1.1	2.2	1.2	0.0
12	2.0	2.0	2.1	3.1	0.0	1.1	2.3	1.2
K-2	3.0	2.2	3.4	3.7	3.7	3.7	3.7	3.7
3-5	2.0	3.0	3.0	3.0	2.2	3.4	3.7	3.8
6-8	3.0	4.1	3.2	2.2	3.2	3.3	3.3	2.4
9-12	9.0	7.0	6.3	6.4	4.4	4.4	4.7	4.7
K-12	17.0	16.3	15.9	15.3	13.5	14.8	15.4	14.6

Study Area 15		Projection Date 10/7/2020						
	CURRENT	PROJECTED RESIDENT STUDENTS						
	2020	2021	2022	2023	2024	2025	2026	2027
K	2.0	2.3	2.4	2.5	2.5	2.5	2.5	2.5
1	1.0	2.0	2.3	2.4	2.5	2.5	2.5	2.5
2	0.0	1.0	2.1	2.4	2.4	2.6	2.6	2.5
3	0.0	0.0	1.0	2.0	2.4	2.4	2.6	2.5
4	1.0	0.0	0.0	1.0	2.0	2.3	2.4	2.5
5	2.0	1.0	0.0	0.0	1.0	2.1	2.4	2.5
6	2.0	2.1	1.1	0.0	0.0	1.1	2.2	2.6
7	0.0	2.1	2.2	1.1	0.0	0.0	1.1	2.3
8	0.0	0.0	2.1	2.2	1.1	0.0	0.0	1.2
9	0.0	0.0	0.0	2.2	2.3	1.2	0.0	0.0
10	0.0	0.0	0.0	0.0	2.2	2.3	1.2	0.0
11	0.0	0.0	0.0	0.0	0.0	2.2	2.3	1.2
12	1.0	0.0	0.0	0.0	0.0	0.0	2.3	2.4
K-2	3.0	5.3	6.8	7.3	7.4	7.6	7.6	7.5
3-5	3.0	1.0	1.0	3.0	5.4	6.8	7.4	7.5
6-8	2.0	4.2	5.4	3.3	1.1	1.1	3.3	6.1
9-12	1.0	0.0	0.0	2.2	4.5	5.7	5.8	3.6
K-12	9.0	10.5	13.2	15.8	18.4	21.2	24.1	24.7



Fall 2020/21 Demographic Report

Study Area 16		Projection Date 10/7/2020						
	CURRENT	PROJECTED RESIDENT STUDENTS						
	2020	2021	2022	2023	2024	2025	2026	2027
K	1.0	1.2	1.2	1.3	1.2	1.2	1.2	1.2
1	2.0	1.0	1.2	1.2	1.3	1.2	1.2	1.2
2	0.0	2.1	1.0	1.2	1.2	1.3	1.3	1.3
3	3.0	0.0	2.0	1.0	1.2	1.2	1.3	1.3
4	3.0	3.0	0.0	2.0	1.0	1.2	1.2	1.3
5	6.0	3.1	3.1	0.0	2.1	1.0	1.2	1.2
6	2.0	6.3	3.3	3.2	0.0	2.2	1.1	1.3
7	1.0	2.1	6.5	3.4	3.3	0.0	2.3	1.1
8	4.0	1.0	2.1	6.6	3.4	3.4	0.0	2.3
9	0.0	4.1	1.1	2.2	6.8	3.5	3.5	0.0
10	2.0	0.0	4.2	1.1	2.2	6.9	3.6	3.5
11	0.0	2.0	0.0	4.2	1.1	2.2	7.0	3.7
12	1.0	0.0	2.1	0.0	4.3	1.1	2.3	7.1
K-2	3.0	4.3	3.4	3.7	3.7	3.7	3.7	3.7
3-5	12.0	6.1	5.1	3.0	4.3	3.4	3.7	3.8
6-8	7.0	9.4	11.9	13.2	6.7	5.6	3.4	4.7
9-12	3.0	6.1	7.4	7.5	14.4	13.7	16.4	14.3
K-12	25.0	25.9	27.8	27.4	29.1	26.4	27.2	26.5

Study Area 17		Projection Date 10/7/2020						
	CURRENT	PROJECTED RESIDENT STUDENTS						
	2020	2021	2022	2023	2024	2025	2026	2027
K	4.0	4.6	4.7	5.0	5.0	4.9	4.9	4.9
1	2.0	4.0	4.6	4.7	5.0	5.0	4.9	4.9
2	5.0	2.1	4.1	4.8	4.9	5.2	5.2	5.1
3	4.0	4.9	2.0	4.1	4.7	4.8	5.1	5.1
4	3.0	4.0	4.9	2.0	4.0	4.7	4.8	5.1
5	4.0	3.1	4.1	5.1	2.1	4.2	4.9	5.0
6	3.0	4.2	3.3	4.3	5.4	2.2	4.4	5.1
7	6.0	3.1	4.3	3.4	4.5	5.5	2.3	4.5
8	4.0	6.1	3.2	4.4	3.4	4.5	5.6	2.3
9	5.0	4.1	6.3	3.2	4.5	3.5	4.7	5.8
10	3.0	5.1	4.2	6.4	3.3	4.6	3.6	4.7
11	4.0	3.1	5.2	4.2	6.5	3.3	4.7	3.7
12	5.0	4.0	3.1	5.2	4.3	6.6	3.4	4.7
K-2	11.0	10.7	13.4	14.5	14.9	15.1	15.0	14.9
3-5	11.0	12.0	11.0	11.2	10.8	13.7	14.8	15.2
6-8	13.0	13.4	10.8	12.1	13.3	12.2	12.3	11.9
9-12	17.0	16.3	18.8	19.0	18.6	18.0	16.4	18.9
K-12	52.0	52.4	54.0	56.8	57.6	59.0	58.5	60.9

Study Area 18		Projection Date 10/7/2020						
	CURRENT	PROJECTED RESIDENT STUDENTS						
	2020	2021	2022	2023	2024	2025	2026	2027
K	5.0	5.8	5.9	6.3	6.2	6.2	6.2	6.2
1	4.0	5.0	5.8	5.9	6.3	6.2	6.2	6.2
2	7.0	4.1	5.2	6.0	6.1	6.5	6.4	6.3
3	5.0	6.9	4.1	5.1	5.9	6.0	6.4	6.4
4	4.0	4.9	6.9	4.0	5.0	5.9	6.0	6.4
5	2.0	4.2	5.1	7.1	4.2	5.2	6.1	6.2
6	6.0	2.1	4.4	5.4	7.5	4.4	5.5	6.4
7	5.0	6.2	2.2	4.5	5.6	7.7	4.5	5.7
8	4.0	5.1	6.3	2.2	4.6	5.7	7.9	4.6
9	5.0	4.1	5.3	6.5	2.3	4.7	5.8	8.1
10	6.0	5.1	4.2	5.3	6.6	2.3	4.8	5.9
11	6.0	6.1	5.2	4.2	5.4	6.7	2.3	4.9
12	5.0	6.1	6.2	5.2	4.3	5.5	6.8	2.4
K-2	16.0	14.9	16.9	18.2	18.6	18.9	18.8	18.7
3-5	11.0	16.0	16.1	16.2	15.1	17.1	18.5	19.0
6-8	15.0	13.4	12.9	12.1	17.7	17.8	17.9	16.7
9-12	22.0	21.4	20.9	21.2	18.6	19.2	19.7	21.3
K-12	64.0	65.7	66.8	67.7	70.0	73.0	74.9	75.7



Fall 2020/21 Demographic Report

Study Area 21		Projection Date 10/7/2020						
CURRENT		PROJECTED RESIDENT STUDENTS						
	2020	2021	2022	2023	2024	2025	2026	2027
K	2.0	2.3	2.4	2.5	2.5	2.5	2.5	2.5
1	9.0	2.0	2.3	2.4	2.5	2.5	2.5	2.5
2	8.0	9.3	2.1	2.4	2.4	2.6	2.6	2.5
3	5.0	7.9	9.2	2.0	2.4	2.4	2.6	2.5
4	9.0	4.9	7.8	9.1	2.0	2.3	2.4	2.5
5	5.0	9.4	5.1	8.2	9.4	2.1	2.4	2.5
6	8.0	5.2	9.8	5.4	8.6	9.9	2.2	2.6
7	8.0	8.2	5.4	10.1	5.6	8.8	10.2	2.3
8	2.0	8.2	8.4	5.5	10.3	5.7	9.0	10.4
9	4.0	2.1	8.4	8.7	5.7	10.6	5.8	9.3
10	2.0	4.0	2.1	8.5	8.7	5.7	10.7	5.9
11	4.0	2.0	4.1	2.1	8.7	8.9	5.9	11.0
12	5.0	4.0	2.1	4.2	2.1	8.7	9.0	5.9
K-2	19.0	13.6	6.8	7.3	7.4	7.6	7.6	7.5
3-5	19.0	22.2	22.1	19.3	13.8	6.8	7.4	7.5
6-8	18.0	21.6	23.6	21.0	24.5	24.4	21.4	15.3
9-12	15.0	12.1	16.7	23.5	25.2	33.9	31.4	32.1
K-12	71.0	69.5	69.2	71.1	70.9	72.7	67.8	62.4

Study Area 23		Projection Date 10/7/2020						
CURRENT		PROJECTED RESIDENT STUDENTS						
	2020	2021	2022	2023	2024	2025	2026	2027
K	3.0	3.5	3.5	3.8	3.8	3.7	3.7	3.7
1	3.0	3.0	3.5	3.5	3.8	3.8	3.7	3.7
2	5.0	3.1	3.1	3.6	3.6	3.9	3.9	3.8
3	6.0	4.9	3.1	3.1	3.5	3.6	3.9	3.8
4	3.0	5.9	4.9	3.0	3.0	3.5	3.6	3.8
5	4.0	3.1	6.2	5.1	3.1	3.1	3.7	3.7
6	6.0	4.2	3.3	6.5	5.4	3.3	3.3	3.8
7	0.0	6.2	4.3	3.4	6.7	5.5	3.4	3.4
8	3.0	0.0	6.3	4.4	3.4	6.8	5.6	3.5
9	0.0	3.1	0.0	6.5	4.5	3.5	7.0	5.8
10	0.0	0.0	3.1	0.0	6.6	4.6	3.6	7.1
11	1.0	0.0	0.0	3.2	0.0	6.7	4.7	3.7
12	2.0	1.0	0.0	0.0	3.2	0.0	6.8	4.7
K-2	11.0	9.6	10.1	10.9	11.2	11.4	11.3	11.2
3-5	13.0	13.9	14.2	11.2	9.6	10.2	11.2	11.3
6-8	9.0	10.4	13.9	14.3	15.5	15.6	12.3	10.7
9-12	3.0	4.1	3.1	9.7	14.3	14.8	22.1	21.3
K-12	36.0	38.0	41.3	46.1	50.6	52.0	56.9	54.5

Study Area 25		Projection Date 10/7/2020						
CURRENT		PROJECTED RESIDENT STUDENTS						
	2020	2021	2022	2023	2024	2025	2026	2027
K	2.0	2.3	2.4	2.5	2.5	2.5	2.5	2.5
1	6.0	2.0	2.3	2.4	2.5	2.5	2.5	2.5
2	6.0	6.2	2.1	2.4	2.4	2.6	2.6	2.5
3	2.0	5.9	6.1	2.0	2.4	2.4	2.6	2.5
4	5.0	2.0	5.9	6.1	2.0	2.3	2.4	2.5
5	3.0	5.2	2.1	6.1	6.3	2.1	2.4	2.5
6	5.0	3.2	5.5	2.2	6.4	6.6	2.2	2.6
7	2.0	5.2	3.2	5.6	2.2	6.6	6.8	2.3
8	5.0	2.0	5.3	3.3	5.7	2.3	6.7	6.9
9	4.0	5.2	2.1	5.4	3.4	5.9	2.3	6.9
10	0.0	4.0	5.2	2.1	5.5	3.4	6.0	2.4
11	7.0	0.0	4.1	5.3	2.2	5.6	3.5	6.1
12	0.0	7.1	0.0	4.2	5.4	2.2	5.6	3.5
K-2	14.0	10.5	6.8	7.3	7.4	7.6	7.6	7.5
3-5	10.0	13.1	14.1	14.2	10.7	6.8	7.4	7.5
6-8	12.0	10.4	14.0	11.1	14.3	15.5	15.7	11.8
9-12	11.0	16.3	11.4	17.0	16.5	17.1	17.4	18.9
K-12	47.0	50.3	46.3	49.6	48.9	47.0	48.1	45.7



Fall 2020/21 Demographic Report

Study Area 27		Projection Date 10/7/2020						
	CURRENT	PROJECTED RESIDENT STUDENTS						
	2020	2021	2022	2023	2024	2025	2026	2027
K	4.0	4.6	4.7	5.0	5.0	4.9	4.9	4.9
1	6.0	4.0	4.6	4.7	5.0	5.0	4.9	4.9
2	2.0	6.2	4.1	4.8	4.9	5.2	5.2	5.1
3	4.0	2.0	6.1	4.1	4.7	4.8	5.1	5.1
4	1.0	4.0	2.0	6.1	4.0	4.7	4.8	5.1
5	2.0	1.0	4.1	2.0	6.3	4.2	4.9	5.0
6	5.0	2.1	1.1	4.3	2.1	6.6	4.4	5.1
7	1.0	5.2	2.2	1.1	4.5	2.2	6.8	4.5
8	4.0	1.0	5.3	2.2	1.1	4.5	2.2	6.9
9	1.0	4.1	1.1	5.4	2.3	1.2	4.7	2.3
10	3.0	1.0	4.2	1.1	5.5	2.3	1.2	4.7
11	4.0	3.1	1.0	4.2	1.1	5.6	2.3	1.2
12	6.0	4.0	3.1	1.0	4.3	1.1	5.6	2.4
K-2	12.0	14.8	13.4	14.5	14.9	15.1	15.0	14.9
3-5	7.0	7.0	12.2	12.2	15.0	13.7	14.8	15.2
6-8	10.0	8.3	8.6	7.6	7.7	13.3	13.4	16.5
9-12	14.0	12.2	9.4	11.7	13.2	10.2	13.8	10.6
K-12	43.0	42.3	43.6	46.0	50.8	52.3	57.0	57.2

Study Area 29		Projection Date 10/7/2020						
	CURRENT	PROJECTED RESIDENT STUDENTS						
	2020	2021	2022	2023	2024	2025	2026	2027
K	6.0	7.0	7.1	7.6	7.5	7.4	7.4	7.4
1	5.0	6.0	7.0	7.1	7.6	7.5	7.4	7.4
2	6.0	5.2	6.2	7.2	7.3	7.8	7.7	7.6
3	3.0	5.9	5.1	6.1	7.1	7.2	7.7	7.6
4	6.0	3.0	5.9	5.0	6.1	7.0	7.1	7.6
5	2.0	6.2	3.1	6.1	5.2	6.3	7.3	7.4
6	6.0	2.1	6.6	3.2	6.4	5.5	6.6	7.7
7	6.0	6.2	2.2	6.7	3.3	6.6	5.7	6.8
8	3.0	6.1	6.3	2.2	6.9	3.4	6.7	5.8
9	5.0	3.1	6.3	6.5	2.3	7.1	3.5	6.9
10	3.0	5.1	3.1	6.4	6.6	2.3	7.2	3.5
11	3.0	3.1	5.2	3.2	6.5	6.7	2.3	7.3
12	3.0	3.0	3.1	5.2	3.2	6.6	6.8	2.4
K-2	17.0	18.2	20.3	21.9	22.4	22.7	22.5	22.4
3-5	11.0	15.1	14.1	17.2	18.4	20.5	22.1	22.6
6-8	15.0	14.4	15.1	12.1	16.6	15.5	19.0	20.3
9-12	14.0	14.3	17.7	21.3	18.6	22.7	19.8	20.1
K-12	57.0	62.0	67.2	72.5	76.0	81.4	83.4	85.4

Study Area 30		Projection Date 10/7/2020						
	CURRENT	PROJECTED RESIDENT STUDENTS						
	2020	2021	2022	2023	2024	2025	2026	2027
K	6.0	7.3	7.4	7.8	7.9	7.8	7.8	7.8
1	2.0	6.4	7.5	7.4	8.0	7.9	7.8	7.8
2	4.0	2.5	6.7	7.7	7.8	8.2	8.2	8.0
3	7.0	4.3	2.6	6.7	7.8	7.7	8.2	8.1
4	4.0	7.3	4.4	2.6	6.7	7.7	7.7	8.1
5	4.0	4.6	7.8	4.6	2.8	7.0	8.0	8.0
6	3.0	4.6	4.9	8.1	5.0	3.0	7.4	8.4
7	4.0	3.4	4.9	5.1	8.5	5.2	3.0	7.6
8	4.0	4.4	3.6	5.0	5.3	8.7	5.3	3.1
9	7.0	4.3	4.6	3.7	5.2	5.5	9.0	5.4
10	1.0	7.3	4.4	4.7	3.8	5.2	5.5	9.0
11	4.0	1.2	7.5	4.5	4.8	3.9	5.4	5.6
12	3.0	4.2	1.3	7.6	4.7	4.9	3.9	5.4
K-2	12.0	16.2	21.6	22.9	23.7	23.9	23.8	23.6
3-5	15.0	16.2	14.8	13.9	17.3	22.4	23.9	24.2
6-8	11.0	12.4	13.4	18.2	18.8	16.9	15.7	19.1
9-12	15.0	17.0	17.8	20.5	18.5	19.5	23.8	25.4
K-12	53.0	61.8	67.6	75.5	78.3	82.7	87.2	92.3



Fall 2020/21 Demographic Report

Study Area 31		Projection Date 10/7/2020						
CURRENT		PROJECTED RESIDENT STUDENTS						
	2020	2021	2022	2023	2024	2025	2026	2027
K	2.0	2.3	2.4	2.5	2.5	2.5	2.5	2.5
1	1.0	2.0	2.3	2.4	2.5	2.5	2.5	2.5
2	1.0	1.0	2.1	2.4	2.4	2.6	2.6	2.5
3	0.0	1.0	1.0	2.0	2.4	2.4	2.6	2.5
4	1.0	0.0	1.0	1.0	2.0	2.3	2.4	2.5
5	2.0	1.0	0.0	1.0	1.0	2.1	2.4	2.5
6	3.0	2.1	1.1	0.0	1.1	1.1	2.2	2.6
7	2.0	3.1	2.2	1.1	0.0	1.1	1.1	2.3
8	6.0	2.0	3.2	2.2	1.1	0.0	1.1	1.2
9	3.0	6.2	2.1	3.2	2.3	1.2	0.0	1.2
10	2.0	3.0	6.2	2.1	3.3	2.3	1.2	0.0
11	3.0	2.0	3.1	6.4	2.2	3.3	2.3	1.2
12	3.0	3.0	2.1	3.1	6.4	2.2	3.4	2.4
K-2	4.0	5.3	6.8	7.3	7.4	7.6	7.6	7.5
3-5	3.0	2.0	2.0	4.0	5.4	6.8	7.4	7.5
6-8	11.0	7.2	6.5	3.3	2.2	2.2	4.4	6.1
9-12	11.0	14.2	13.5	14.8	14.2	9.0	6.9	4.8
K-12	29.0	28.7	28.8	29.4	29.2	25.6	26.3	25.9

Study Area 33		Projection Date 10/7/2020						
CURRENT		PROJECTED RESIDENT STUDENTS						
	2020	2021	2022	2023	2024	2025	2026	2027
K	7.0	8.1	8.3	8.8	8.8	8.6	8.6	8.6
1	5.0	7.0	8.1	8.3	8.8	8.8	8.6	8.6
2	8.0	5.2	7.2	8.4	8.5	9.1	9.0	8.9
3	5.0	7.9	5.1	7.1	8.3	8.4	9.0	8.9
4	5.0	4.9	7.8	5.0	7.1	8.2	8.3	8.9
5	5.0	5.2	5.1	8.2	5.2	7.3	8.5	8.7
6	4.0	5.2	5.5	5.4	8.6	5.5	7.7	9.0
7	7.0	4.1	5.4	5.6	5.6	8.8	5.7	7.9
8	5.0	7.1	4.2	5.5	5.7	5.7	9.0	5.8
9	6.0	5.2	7.4	4.3	5.7	5.9	5.8	9.3
10	2.0	6.1	5.2	7.4	4.4	5.7	6.0	5.9
11	6.0	2.0	6.2	5.3	7.6	4.5	5.9	6.1
12	10.0	6.1	2.1	6.2	5.4	7.7	4.5	5.9
K-2	20.0	20.3	23.6	25.5	26.1	26.5	26.2	26.1
3-5	15.0	18.0	18.0	20.3	20.6	23.9	25.8	26.5
6-8	16.0	16.4	15.1	16.5	19.9	20.0	22.4	22.7
9-12	24.0	19.4	20.9	23.2	23.1	23.8	22.2	27.2
K-12	75.0	74.1	77.6	85.5	89.7	94.2	96.6	102.5

Study Area 35		Projection Date 10/7/2020						
CURRENT		PROJECTED RESIDENT STUDENTS						
	2020	2021	2022	2023	2024	2025	2026	2027
K	3.0	3.5	3.5	3.8	3.8	3.7	3.7	3.7
1	5.0	3.0	3.5	3.5	3.8	3.8	3.7	3.7
2	4.0	5.2	3.1	3.6	3.6	3.9	3.9	3.8
3	1.0	4.0	5.1	3.1	3.5	3.6	3.9	3.8
4	5.0	1.0	3.9	5.0	3.0	3.5	3.6	3.8
5	8.0	5.2	1.0	4.1	5.2	3.1	3.7	3.7
6	8.0	8.4	5.5	1.1	4.3	5.5	3.3	3.8
7	4.0	8.2	8.7	5.6	1.1	4.4	5.7	3.4
8	8.0	4.1	8.4	8.8	5.7	1.1	4.5	5.8
9	4.0	8.2	4.2	8.7	9.1	5.9	1.2	4.6
10	2.0	4.0	8.3	4.2	8.7	9.2	6.0	1.2
11	2.0	2.0	4.1	8.5	4.3	8.9	9.4	6.1
12	8.0	2.0	2.1	4.2	8.6	4.4	9.0	9.5
K-2	12.0	11.7	10.1	10.9	11.2	11.4	11.3	11.2
3-5	14.0	10.2	10.0	12.2	11.7	10.2	11.2	11.3
6-8	20.0	20.7	22.6	15.5	11.1	11.0	13.5	13.0
9-12	16.0	16.2	18.7	25.6	30.7	28.4	25.6	21.4
K-12	62.0	58.8	61.4	64.2	64.7	61.0	61.6	56.9



Fall 2020/21 Demographic Report

Study Area 37		Projection Date 10/7/2020						
	CURRENT	PROJECTED RESIDENT STUDENTS						
	2020	2021	2022	2023	2024	2025	2026	2027
K	4.0	4.6	4.7	5.0	5.0	4.9	4.9	4.9
1	5.0	4.0	4.6	4.7	5.0	5.0	4.9	4.9
2	4.0	5.2	4.1	4.8	4.9	5.2	5.2	5.1
3	2.0	4.0	5.1	4.1	4.7	4.8	5.1	5.1
4	4.0	2.0	3.9	5.0	4.0	4.7	4.8	5.1
5	7.0	4.2	2.1	4.1	5.2	4.2	4.9	5.0
6	4.0	7.3	4.4	2.2	4.3	5.5	4.4	5.1
7	3.0	4.1	7.6	4.5	2.2	4.4	5.7	4.5
8	6.0	3.1	4.2	7.7	4.6	2.3	4.5	5.8
9	5.0	6.2	3.2	4.3	8.0	4.7	2.3	4.6
10	7.0	5.1	6.2	3.2	4.4	8.0	4.8	2.4
11	5.0	7.1	5.2	6.4	3.2	4.5	8.2	4.9
12	6.0	5.1	7.2	5.2	6.4	3.3	4.5	8.3
K-2	13.0	13.8	13.4	14.5	14.9	15.1	15.0	14.9
3-5	13.0	10.2	11.1	13.2	13.7	13.7	14.8	15.2
6-8	13.0	14.5	16.2	14.4	11.1	12.2	14.6	15.4
9-12	23.0	23.5	21.8	19.1	22.0	20.5	19.8	20.2
K-12	62.0	62.0	62.5	61.2	61.9	61.5	64.2	65.7

Study Area 38		Projection Date 10/7/2020						
	CURRENT	PROJECTED RESIDENT STUDENTS						
	2020	2021	2022	2023	2024	2025	2026	2027
K	1.0	1.2	1.2	1.3	1.2	1.2	1.2	1.2
1	4.0	1.0	1.2	1.2	1.3	1.2	1.2	1.2
2	4.0	4.1	1.0	1.2	1.2	1.3	1.3	1.3
3	3.0	4.0	4.1	1.0	1.2	1.2	1.3	1.3
4	1.0	3.0	3.9	4.0	1.0	1.2	1.2	1.3
5	2.0	1.0	3.1	4.1	4.2	1.0	1.2	1.2
6	3.0	2.1	1.1	3.2	4.3	4.4	1.1	1.3
7	1.0	3.1	2.2	1.1	3.3	4.4	4.5	1.1
8	3.0	1.0	3.2	2.2	1.1	3.4	4.5	4.6
9	3.0	3.1	1.1	3.2	2.3	1.2	3.5	4.6
10	1.0	3.0	3.1	1.1	3.3	2.3	1.2	3.5
11	2.0	1.0	3.1	3.2	1.1	3.3	2.3	1.2
12	3.0	2.0	1.0	3.1	3.2	1.1	3.4	2.4
K-2	9.0	6.3	3.4	3.7	3.7	3.7	3.7	3.7
3-5	6.0	8.0	11.1	9.1	6.4	3.4	3.7	3.8
6-8	7.0	6.2	6.5	6.5	8.7	12.2	10.1	7.0
9-12	9.0	9.1	8.3	10.6	9.9	7.9	10.4	11.7
K-12	31.0	29.6	29.3	29.9	28.7	27.2	27.9	26.2

Study Area 39		Projection Date 10/7/2020						
	CURRENT	PROJECTED RESIDENT STUDENTS						
	2020	2021	2022	2023	2024	2025	2026	2027
K	4.0	4.6	4.7	5.0	5.0	4.9	4.9	4.9
1	6.0	4.0	4.6	4.7	5.0	5.0	4.9	4.9
2	7.0	6.2	4.1	4.8	4.9	5.2	5.2	5.1
3	8.0	6.9	6.1	4.1	4.7	4.8	5.1	5.1
4	4.0	7.9	6.9	6.1	4.0	4.7	4.8	5.1
5	6.0	4.2	8.2	7.1	6.3	4.2	4.9	5.0
6	8.0	6.3	4.4	8.6	7.5	6.6	4.4	5.1
7	6.0	8.2	6.5	4.5	8.9	7.7	6.8	4.5
8	5.0	6.1	8.4	6.6	4.6	9.1	7.9	6.9
9	7.0	5.2	6.3	8.7	6.8	4.7	9.4	8.1
10	3.0	7.1	5.2	6.4	8.7	6.9	4.8	9.5
11	6.0	3.1	7.2	5.3	6.5	8.9	7.0	4.9
12	7.0	6.1	3.1	7.3	5.4	6.6	9.0	7.1
K-2	17.0	14.8	13.4	14.5	14.9	15.1	15.0	14.9
3-5	18.0	19.0	21.2	17.3	15.0	13.7	14.8	15.2
6-8	19.0	20.6	19.3	19.7	21.0	23.4	19.1	16.5
9-12	23.0	21.5	21.8	27.7	27.4	27.1	30.2	29.6
K-12	77.0	75.9	75.7	79.2	78.3	79.3	79.1	76.2



Fall 2020/21 Demographic Report

Study Area 40		Projection Date 10/7/2020						
CURRENT		PROJECTED RESIDENT STUDENTS						
	2020	2021	2022	2023	2024	2025	2026	2027
K	1.0	1.2	1.2	1.3	1.2	1.2	1.2	1.2
1	1.0	1.0	1.2	1.2	1.3	1.2	1.2	1.2
2	2.0	1.0	1.0	1.2	1.2	1.3	1.3	1.3
3	1.0	2.0	1.0	1.0	1.2	1.2	1.3	1.3
4	0.0	1.0	2.0	1.0	1.0	1.2	1.2	1.3
5	4.0	0.0	1.0	2.0	1.0	1.0	1.2	1.2
6	1.0	4.2	0.0	1.1	2.1	1.1	1.1	1.3
7	2.0	1.0	4.3	0.0	1.1	2.2	1.1	1.1
8	2.0	2.0	1.1	4.4	0.0	1.1	2.2	1.2
9	2.0	2.1	2.1	1.1	4.5	0.0	1.2	2.3
10	2.0	2.0	2.1	2.1	1.1	4.6	0.0	1.2
11	5.0	2.0	2.1	2.1	2.2	1.1	4.7	0.0
12	3.0	5.1	2.1	2.1	2.1	2.2	1.1	4.7
K-2	4.0	3.2	3.4	3.7	3.7	3.7	3.7	3.7
3-5	5.0	3.0	4.0	4.0	3.2	3.4	3.7	3.8
6-8	5.0	7.2	5.4	5.5	3.2	4.4	4.4	3.6
9-12	12.0	11.2	8.4	7.4	9.9	7.9	7.0	8.2
K-12	26.0	24.6	21.2	20.6	20.0	19.4	18.8	19.3

Study Area 41		Projection Date 10/7/2020						
CURRENT		PROJECTED RESIDENT STUDENTS						
	2020	2021	2022	2023	2024	2025	2026	2027
K	3.0	3.5	3.5	3.8	3.8	3.7	3.7	3.7
1	2.0	3.0	3.5	3.5	3.8	3.8	3.7	3.7
2	4.0	2.1	3.1	3.6	3.6	3.9	3.9	3.8
3	2.0	4.0	2.0	3.1	3.5	3.6	3.9	3.8
4	4.0	2.0	3.9	2.0	3.0	3.5	3.6	3.8
5	3.0	4.2	2.1	4.1	2.1	3.1	3.7	3.7
6	3.0	3.2	4.4	2.2	4.3	2.2	3.3	3.8
7	6.0	3.1	3.2	4.5	2.2	4.4	2.3	3.4
8	2.0	6.1	3.2	3.3	4.6	2.3	4.5	2.3
9	5.0	2.1	6.3	3.2	3.4	4.7	2.3	4.6
10	5.0	5.1	2.1	6.4	3.3	3.4	4.8	2.4
11	9.0	5.1	5.2	2.1	6.5	3.3	3.5	4.9
12	6.0	9.1	5.2	5.2	2.1	6.6	3.4	3.5
K-2	9.0	8.6	10.1	10.9	11.2	11.4	11.3	11.2
3-5	9.0	10.2	8.0	9.2	8.6	10.2	11.2	11.3
6-8	11.0	12.4	10.8	10.0	11.1	8.9	10.1	9.5
9-12	25.0	21.4	18.8	16.9	15.3	18.0	14.0	15.4
K-12	54.0	52.6	47.7	47.0	46.2	48.5	46.6	47.4

Study Area 43		Projection Date 10/7/2020						
CURRENT		PROJECTED RESIDENT STUDENTS						
	2020	2021	2022	2023	2024	2025	2026	2027
K	3.0	3.5	3.5	3.8	3.8	3.7	3.7	3.7
1	3.0	3.0	3.5	3.5	3.8	3.8	3.7	3.7
2	7.0	3.1	3.1	3.6	3.6	3.9	3.9	3.8
3	5.0	6.9	3.1	3.1	3.5	3.6	3.9	3.8
4	3.0	4.9	6.9	3.0	3.0	3.5	3.6	3.8
5	7.0	3.1	5.1	7.1	3.1	3.1	3.7	3.7
6	6.0	7.3	3.3	5.4	7.5	3.3	3.3	3.8
7	3.0	6.2	7.6	3.4	5.6	7.7	3.4	3.4
8	8.0	3.1	6.3	7.7	3.4	5.7	7.9	3.5
9	7.0	8.2	3.2	6.5	8.0	3.5	5.8	8.1
10	5.0	7.1	8.3	3.2	6.6	8.0	3.6	5.9
11	4.0	5.1	7.2	8.5	3.2	6.7	8.2	3.7
12	5.0	4.0	5.2	7.3	8.6	3.3	6.8	8.3
K-2	13.0	9.6	10.1	10.9	11.2	11.4	11.3	11.2
3-5	15.0	14.9	15.1	13.2	9.6	10.2	11.2	11.3
6-8	17.0	16.6	17.2	16.5	16.5	16.7	14.6	10.7
9-12	21.0	24.4	23.9	25.5	26.4	21.5	24.4	26.0
K-12	66.0	65.5	66.3	66.1	63.7	59.8	61.5	59.2



Fall 2020/21 Demographic Report

Study Area 44		Projection Date 10/7/2020						
	CURRENT	PROJECTED RESIDENT STUDENTS						
	2020	2021	2022	2023	2024	2025	2026	2027
K	2.0	2.3	2.4	2.5	2.5	2.5	2.5	2.5
1	6.0	2.0	2.3	2.4	2.5	2.5	2.5	2.5
2	8.0	6.2	2.1	2.4	2.4	2.6	2.6	2.5
3	2.0	7.9	6.1	2.0	2.4	2.4	2.6	2.5
4	4.0	2.0	7.8	6.1	2.0	2.3	2.4	2.5
5	4.0	4.2	2.1	8.2	6.3	2.1	2.4	2.5
6	4.0	4.2	4.4	2.2	8.6	6.6	2.2	2.6
7	2.0	4.1	4.3	4.5	2.2	8.8	6.8	2.3
8	2.0	2.0	4.2	4.4	4.6	2.3	9.0	6.9
9	6.0	2.1	2.1	4.3	4.5	4.7	2.3	9.3
10	2.0	6.1	2.1	2.1	4.4	4.6	4.8	2.4
11	3.0	2.0	6.2	2.1	2.2	4.5	4.7	4.9
12	9.0	3.0	2.1	6.2	2.1	2.2	4.5	4.7
K-2	16.0	10.5	6.8	7.3	7.4	7.6	7.6	7.5
3-5	10.0	14.1	16.0	16.3	10.7	6.8	7.4	7.5
6-8	8.0	10.3	12.9	11.1	15.4	17.7	18.0	11.8
9-12	20.0	13.2	12.5	14.7	13.2	16.0	16.3	21.3
K-12	54.0	48.1	48.2	49.4	46.7	48.1	49.3	48.1

Study Area 46		Projection Date 10/7/2020						
	CURRENT	PROJECTED RESIDENT STUDENTS						
	2020	2021	2022	2023	2024	2025	2026	2027
K	2.0	2.3	2.4	2.5	2.5	2.5	2.5	2.5
1	7.0	2.0	2.3	2.4	2.5	2.5	2.5	2.5
2	4.0	7.2	2.1	2.4	2.4	2.6	2.6	2.5
3	6.0	4.0	7.1	2.0	2.4	2.4	2.6	2.5
4	5.0	5.9	3.9	7.1	2.0	2.3	2.4	2.5
5	3.0	5.2	6.2	4.1	7.3	2.1	2.4	2.5
6	7.0	3.2	5.5	6.5	4.3	7.7	2.2	2.6
7	7.0	7.2	3.2	5.6	6.7	4.4	7.9	2.3
8	1.0	7.1	7.4	3.3	5.7	6.8	4.5	8.1
9	4.0	1.0	7.4	7.6	3.4	5.9	7.0	4.6
10	3.0	4.0	1.0	7.4	7.7	3.4	6.0	7.1
11	5.0	3.1	4.1	1.1	7.6	7.8	3.5	6.1
12	5.0	5.1	3.1	4.2	1.1	7.7	7.9	3.5
K-2	13.0	11.5	6.8	7.3	7.4	7.6	7.6	7.5
3-5	14.0	15.1	17.2	13.2	11.7	6.8	7.4	7.5
6-8	15.0	17.5	16.1	15.4	16.7	18.9	14.6	13.0
9-12	17.0	13.2	15.6	20.3	19.8	24.8	24.4	21.3
K-12	59.0	57.3	55.7	56.2	55.6	58.1	54.0	49.3

Study Area 47		Projection Date 10/7/2020						
	CURRENT	PROJECTED RESIDENT STUDENTS						
	2020	2021	2022	2023	2024	2025	2026	2027
K	6.0	7.0	7.1	7.6	7.5	7.4	7.4	7.4
1	3.0	6.0	7.0	7.1	7.6	7.5	7.4	7.4
2	5.0	3.1	6.2	7.2	7.3	7.8	7.7	7.6
3	5.0	4.9	3.1	6.1	7.1	7.2	7.7	7.6
4	3.0	4.9	4.9	3.0	6.1	7.0	7.1	7.6
5	9.0	3.1	5.1	5.1	3.1	6.3	7.3	7.4
6	5.0	9.4	3.3	5.4	5.4	3.3	6.6	7.7
7	1.0	5.2	9.7	3.4	5.6	5.5	3.4	6.8
8	8.0	1.0	5.3	9.9	3.4	5.7	5.6	3.5
9	2.0	8.2	1.1	5.4	10.2	3.5	5.8	5.8
10	3.0	2.0	8.3	1.1	5.5	10.3	3.6	5.9
11	8.0	3.1	2.1	8.5	1.1	5.6	10.5	3.7
12	3.0	8.1	3.1	2.1	8.6	1.1	5.6	10.6
K-2	14.0	16.1	20.3	21.9	22.4	22.7	22.5	22.4
3-5	17.0	12.9	13.1	14.2	16.3	20.5	22.1	22.6
6-8	14.0	15.6	18.3	18.7	14.4	14.5	15.6	18.0
9-12	16.0	21.4	14.6	17.1	25.4	20.5	25.5	26.0
K-12	61.0	66.0	66.3	71.9	78.5	78.2	85.7	89.0



Fall 2020/21 Demographic Report

Study Area 49		Projection Date 10/7/2020						
CURRENT		PROJECTED RESIDENT STUDENTS						
	2020	2021	2022	2023	2024	2025	2026	2027
K	3.0	3.5	3.5	3.8	3.8	3.7	3.7	3.7
1	7.0	3.0	3.5	3.5	3.8	3.8	3.7	3.7
2	3.0	7.2	3.1	3.6	3.6	3.9	3.9	3.8
3	0.0	3.0	7.1	3.1	3.5	3.6	3.9	3.8
4	5.0	0.0	2.9	7.1	3.0	3.5	3.6	3.8
5	6.0	5.2	0.0	3.1	7.3	3.1	3.7	3.7
6	4.0	6.3	5.5	0.0	3.2	7.7	3.3	3.8
7	5.0	4.1	6.5	5.6	0.0	3.3	7.9	3.4
8	4.0	5.1	4.2	6.6	5.7	0.0	3.4	8.1
9	5.0	4.1	5.3	4.3	6.8	5.9	0.0	3.5
10	6.0	5.1	4.2	5.3	4.4	6.9	6.0	0.0
11	7.0	6.1	5.2	4.2	5.4	4.5	7.0	6.1
12	6.0	7.1	6.2	5.2	4.3	5.5	4.5	7.1
K-2	13.0	13.7	10.1	10.9	11.2	11.4	11.3	11.2
3-5	11.0	8.2	10.0	13.3	13.8	10.2	11.2	11.3
6-8	13.0	15.5	16.2	12.2	8.9	11.0	14.6	15.3
9-12	24.0	22.4	20.9	19.0	20.9	22.8	17.5	16.7
K-12	61.0	59.8	57.2	55.4	54.8	55.4	54.6	54.5

Study Area 51		Projection Date 10/7/2020						
CURRENT		PROJECTED RESIDENT STUDENTS						
	2020	2021	2022	2023	2024	2025	2026	2027
K	2.0	2.3	2.4	2.5	2.5	2.5	2.5	2.5
1	2.0	2.0	2.3	2.4	2.5	2.5	2.5	2.5
2	4.0	2.1	2.1	2.4	2.4	2.6	2.6	2.5
3	0.0	4.0	2.0	2.0	2.4	2.4	2.6	2.5
4	6.0	0.0	3.9	2.0	2.0	2.3	2.4	2.5
5	2.0	6.2	0.0	4.1	2.1	2.1	2.4	2.5
6	4.0	2.1	6.6	0.0	4.3	2.2	2.2	2.6
7	1.0	4.1	2.2	6.7	0.0	4.4	2.3	2.3
8	5.0	1.0	4.2	2.2	6.9	0.0	4.5	2.3
9	3.0	5.2	1.1	4.3	2.3	7.1	0.0	4.6
10	6.0	3.0	5.2	1.1	4.4	2.3	7.2	0.0
11	5.0	6.1	3.1	5.3	1.1	4.5	2.3	7.3
12	4.0	5.1	6.2	3.1	5.4	1.1	4.5	2.4
K-2	8.0	6.4	6.8	7.3	7.4	7.6	7.6	7.5
3-5	8.0	10.2	5.9	8.1	6.5	6.8	7.4	7.5
6-8	10.0	7.2	13.0	8.9	11.2	6.6	9.0	7.2
9-12	18.0	19.4	15.6	13.8	13.2	15.0	14.0	14.3
K-12	44.0	43.2	41.3	38.1	38.3	36.0	38.0	36.5

Study Area 53		Projection Date 10/7/2020						
CURRENT		PROJECTED RESIDENT STUDENTS						
	2020	2021	2022	2023	2024	2025	2026	2027
K	3.0	3.5	3.5	3.8	3.8	3.7	3.7	3.7
1	2.0	3.0	3.5	3.5	3.8	3.8	3.7	3.7
2	6.0	2.1	3.1	3.6	3.6	3.9	3.9	3.8
3	2.0	5.9	2.0	3.1	3.5	3.6	3.9	3.8
4	3.0	2.0	5.9	2.0	3.0	3.5	3.6	3.8
5	4.0	3.1	2.1	6.1	2.1	3.1	3.7	3.7
6	8.0	4.2	3.3	2.2	6.4	2.2	3.3	3.8
7	5.0	8.2	4.3	3.4	2.2	6.6	2.3	3.4
8	8.0	5.1	8.4	4.4	3.4	2.3	6.7	2.3
9	12.0	8.2	5.3	8.7	4.5	3.5	2.3	6.9
10	6.0	12.1	8.3	5.3	8.7	4.6	3.6	2.4
11	8.0	6.1	12.4	8.5	5.4	8.9	4.7	3.7
12	7.0	8.1	6.2	12.5	8.6	5.5	9.0	4.7
K-2	11.0	8.6	10.1	10.9	11.2	11.4	11.3	11.2
3-5	9.0	11.0	10.0	11.2	8.6	10.2	11.2	11.3
6-8	21.0	17.5	16.0	10.0	12.0	11.1	12.3	9.5
9-12	33.0	34.5	32.2	35.0	27.2	22.5	19.6	17.7
K-12	74.0	71.6	68.3	67.1	59.0	55.2	54.4	49.7



Fall 2020/21 Demographic Report

Study Area 55		Projection Date 10/7/2020						
CURRENT		PROJECTED RESIDENT STUDENTS						
	2020	2021	2022	2023	2024	2025	2026	2027
K	1.0	1.2	1.2	1.3	1.2	1.2	1.2	1.2
1	9.0	1.0	1.2	1.2	1.3	1.2	1.2	1.2
2	2.0	9.3	1.0	1.2	1.2	1.3	1.3	1.3
3	2.0	2.0	9.2	1.0	1.2	1.2	1.3	1.3
4	2.0	2.0	2.0	9.1	1.0	1.2	1.2	1.3
5	6.0	2.1	2.1	2.0	9.4	1.0	1.2	1.2
6	3.0	6.3	2.2	2.2	2.1	9.9	1.1	1.3
7	4.0	3.1	6.5	2.2	2.2	2.2	10.2	1.1
8	7.0	4.1	3.2	6.6	2.3	2.3	2.2	10.4
9	5.0	7.2	4.2	3.2	6.8	2.4	2.3	2.3
10	2.0	5.1	7.3	4.2	3.3	6.9	2.4	2.4
11	7.0	2.0	5.2	7.4	4.3	3.3	7.0	2.4
12	5.0	7.1	2.1	5.2	7.5	4.4	3.4	7.1
K-2	12.0	11.5	3.4	3.7	3.7	3.7	3.7	3.7
3-5	10.0	6.1	13.3	12.1	11.6	3.4	3.7	3.8
6-8	14.0	13.5	11.9	11.0	6.6	14.4	13.5	12.8
9-12	19.0	21.4	18.8	20.0	21.9	17.0	15.1	14.2
K-12	55.0	52.5	47.4	46.8	43.8	38.5	36.0	34.5

Study Area 57		Projection Date 10/7/2020						
CURRENT		PROJECTED RESIDENT STUDENTS						
	2020	2021	2022	2023	2024	2025	2026	2027
K	4.0	4.6	4.7	5.2	5.1	5.0	5.0	5.0
1	2.0	4.0	4.6	4.9	5.2	5.1	5.0	5.0
2	3.0	2.1	4.1	5.0	5.1	5.4	5.3	5.2
3	1.0	3.0	2.0	4.3	4.9	5.0	5.3	5.2
4	1.0	1.0	2.9	2.2	4.2	4.9	5.0	5.3
5	3.0	1.0	1.0	3.3	2.3	4.4	5.1	5.2
6	1.0	3.2	1.1	1.3	3.4	2.4	4.6	5.3
7	2.0	1.0	3.2	1.3	1.3	3.5	2.5	4.8
8	4.0	2.0	1.1	3.5	1.3	1.3	3.6	2.5
9	1.0	4.1	2.1	1.2	3.6	1.3	1.4	3.7
10	3.0	1.0	4.2	2.2	1.2	3.6	1.4	1.4
11	3.0	3.1	1.0	4.3	2.3	1.2	3.7	1.4
12	4.0	3.0	3.1	1.1	4.4	2.3	1.2	3.7
K-2	9.0	10.7	13.4	15.1	15.4	15.5	15.3	15.2
3-5	5.0	5.0	5.9	9.8	11.4	14.3	15.4	15.7
6-8	7.0	6.2	5.4	6.1	6.0	7.2	10.7	12.6
9-12	11.0	11.2	10.4	8.8	11.5	8.4	7.7	10.2
K-12	32.0	33.1	35.1	39.8	44.3	45.4	49.1	53.7

Study Area 58		Projection Date 10/7/2020						
CURRENT		PROJECTED RESIDENT STUDENTS						
	2020	2021	2022	2023	2024	2025	2026	2027
K	2.0	3.4	3.9	3.6	3.6	3.5	3.5	3.5
1	2.0	3.0	4.3	3.9	3.6	3.6	3.5	3.5
2	0.0	3.1	4.1	4.4	4.0	3.7	3.7	3.6
3	2.0	1.0	4.0	4.1	4.4	4.0	3.7	3.6
4	0.0	3.0	2.0	4.0	4.0	4.4	3.9	3.6
5	1.0	1.1	4.1	2.0	4.2	4.2	4.5	4.1
6	0.0	2.1	2.1	4.3	2.1	4.4	4.4	4.8
7	1.0	0.9	3.0	2.2	4.5	2.2	4.5	4.5
8	0.0	1.9	1.7	3.1	2.2	4.5	2.2	4.6
9	2.0	0.5	2.4	1.7	3.1	2.3	4.7	2.3
10	2.0	2.6	1.1	2.5	1.7	3.2	2.3	4.7
11	1.0	2.6	3.1	1.1	2.5	1.8	3.2	2.4
12	1.0	1.5	3.1	3.1	1.1	2.5	1.8	3.3
K-2	4.0	9.5	12.3	11.9	11.2	10.8	10.7	10.6
3-5	3.0	5.1	10.1	10.1	12.6	12.6	12.1	11.3
6-8	1.0	4.9	6.8	9.6	8.8	11.1	11.1	13.9
9-12	6.0	7.2	9.7	8.4	8.4	9.8	12.0	12.7
K-12	14.0	26.7	38.9	40.0	41.0	44.3	45.9	48.5